

AGENDA

INFORMATION UPDATE

August 10, 2021

5:00 PM,



I. INFORMATION UPDATE

I.A. Traffic Counts and Transit Ridership



INFORMATION ONLY-MEMORANDUM

TO: Mayor and City Council

FROM: John Krueger, Director of Transportation

THROUGH: Scott Miller, Director Public Works
Trish Aragon, PE, City Engineer

MEETING DATE: August 10, 2021

RE: Information Only: Traffic Counts and Transit Ridership

SUMMARY:

Attached for your information and review are the traffic counts coming in and out of town at the Castle Creek Bridge and transit ridership data for the local City transit system and the RFTA valley system.

BACKGROUND

The City of Aspen has maintained traffic counts with permanent traffic counters located on SH 82 prior to the Castle Creek Bridge to count the daily traffic coming into and out of Aspen since 1999.

The monthly traffic counts from 1993 and were established in the Final Environmental Impact Statement (FEIS) for the Entrance to Aspen (ETA) Record of Decision (ROD) as the target traffic levels. The community adopted the 1993 traffic levels in the Aspen Area Community Plan (AAP) and other planning documents as the community target. Over the years some months have been higher or lower than the 1993 levels but, annual average has remained below the 1993 target level. The many Transportation Demand Measures (TDM) and programs undertaken over the years have contributed to keeping traffic below the 1993 levels. These programs and TDM measures include expanded transit, BRT, paid parking, Car Share, Bike Share, Car-pooling, employer outreach, the Downtowner micro transit, expansion of the Brush Creek Park N Ride lot, and SH 82 bus lanes in and out of town.

Annual Traffic Counts:

The annual traffic count chart shows annual average counts from 1999 through 2021. The chart shows annual counts peaking in 2004 and 2005. Traffic volumes then declined for several years and dipped in 2008 – 2010 during the recession. Counts then began trending upward beginning in 2011. Counts peaked in 2015 and then leveled off. The bridge and bus stop construction project in 2018 greatly impacted the annual counts as the construction and detours routed traffic away from the counters. Counts increased in 2019 and then decreased significantly in 2020 during COVID. Counts are trending upward in 2021 and are approaching the 2019 pre-COVID levels. The annual counts for 2021 year to date (through July) are 14% above the 2020 levels but 2% below the 2019 (pre-Covid) levels for the same period and 11% below the target levels for 1993.

Monthly Traffic Counts:

The monthly chart shows the seasonality of the traffic counts. July and August are the heaviest months of the year with May and November the lightest. The 2021 counts are trending upward exceeding 2020 and approaching 2019 levels. The monthly counts have not exceeded the 1993 target levels.

Daily Traffic Counts:

Daily counts are trending up for 2021 with July being the heaviest month of the year. The July 4th week is the heaviest week of the year. Several days during the July 4th week in 2021 exceeded 28,000. The highest day in 2021 was July 2, at 28,188. The highest day ever was July 3, 2003 when the daily count was recorded at 33,600.

Hourly Traffic Counts:

The hourly traffic count charts for July show the hourly average traffic counts inbound and outbound compared to the S-curves free flowing level (700/hour with little or no delays or congestion). The months of May and November are below this level for most of the day except for an hour or so in the morning and afternoon. The hourly chart for July shows the hourly counts above the S-curve capacity inbound and outbound for most of the day resulting in congestion and delays. The hourly count charts for July 2021 compared to 2019 are very similar. Both charts show traffic rising early in the morning in both directions and not coming back down until approximately 6pm.

Transit Ridership:

Attached are several charts showing ridership from March 4, 2020 (pre-COVID) through the end of July 2021. Ridership is still down from the pre-COVID levels. It is important to note that for much of this period ridership has been restricted due to COVID health orders that restricted the seating capacity of buses and shuttles. Currently, ridership is restricted to the seating capacity of the bus or shuttle. No standees are allowed. As a result, ridership in 2021 is approximately 56% of pre-COVID levels on City routes and below pre-COVID levels on the BRT and valley routes. Ridership pre-COVID on the local City of Aspen system was approximately 1.4 million and on a RFTA system wide was approximately 5.4 million. Ridership on both systems continues to improve.

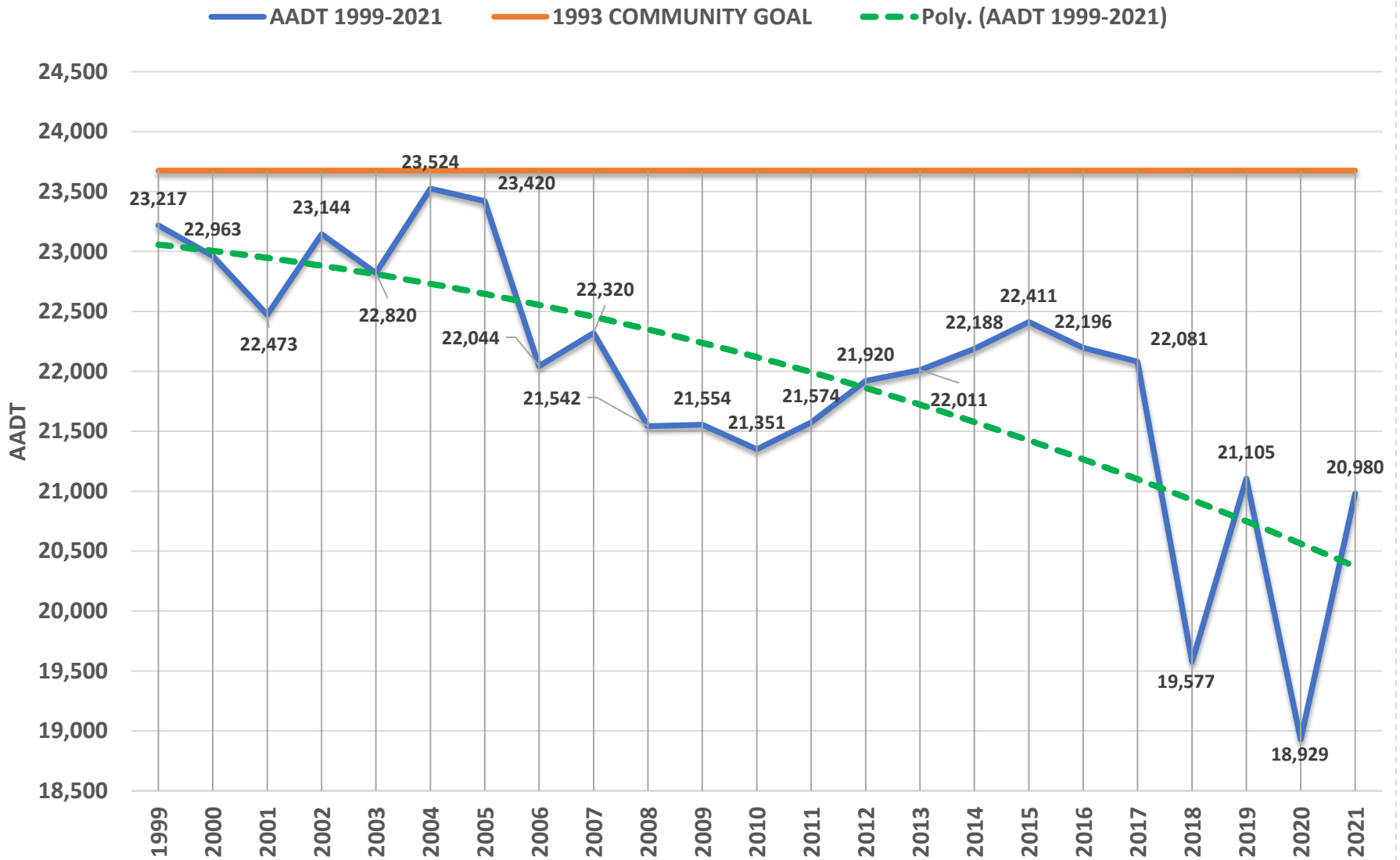
Attachments:

Monthly Traffic Counts
Annual Traffic Count Comparison Chart
Monthly Traffic Count Comparison Chart
July Daily Traffic Count Comparison Chart
July Hourly Traffic Counts
Transit Ridership

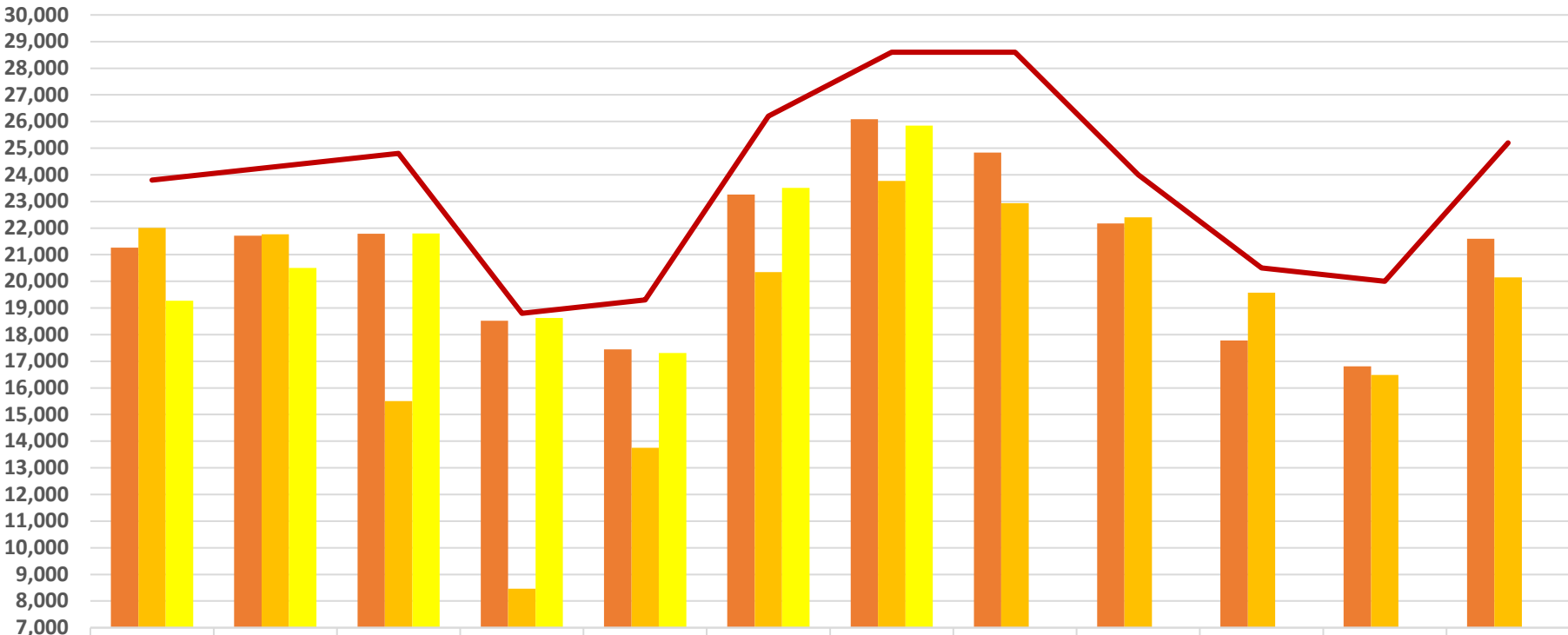
MONTHLY	1993	1999	2000	2001	2002	2003	2004	2005	2006	2007	2008	2009	2010	2011	2012	2013	2014	2015	2016	2017	2018	2019	2020	2021	2021	%	2021	%
AADT																									vs 1993	vs 1993	vs 2020	vs 2020
JAN	23,800	22,701	22,504	22,827	22,945	22,837	23,816	24,398	20,588	23,387	22,584	21,745	21,254	21,994	22,607	23,859	22,956	23,415	23,649	22,766	22,418	21,262	22,005	19,272	-4,528	-19.0%	-2,733	-12.4%
FEB	24,300	23,638	23,910	23,932	23,207	23,694	23,400	24,162	22,356	23,000	22,449	21,131	20,730	21,376	21,684	22,077	22,405	22,804	22,825	23,486	21,871	21,717	21,771	20,501	-3,799	-15.6%	-1,270	-5.8%
MAR	24,800	25,574	24,590	24,752	23,822	23,812	25,417	25,892	23,618	23,927	23,171	21,967	23,852	22,384	22,436	22,742	23,432	24,285	23,648	23,405	22,650	21,792	15,501	21,793	-3,007	-12.1%	6,292	40.6%
APR	18,800	19,734	20,270	19,443	19,900	19,789	18,921	19,420	18,264	18,993	18,882	19,177	18,405	no data	17,134	17,425	17,883	19,163	18,098	17,781	14,528	18,519	8,462	18,627	-173	-0.9%	10,165	120.1%
MAY	19,300	18,538	19,944	18,929	19,310	18,837	18,924	19,021	18,051	18,530	17,813	17,392	17,878	17,874	19,077	17,662	17,396	17,208	18,037	17,985	11,294	17,443	13,748	17,313	-1,987	-10.3%	3,565	25.9%
JUN	26,200	25,408	25,126	23,719	23,618	25,003	25,650	25,097	22,552	23,940	23,279	22,877	22,701	22,724	25,124	22,966	23,884	24,993	24,501	23,986	21,218	23,259	20,344	23,510	-2,690	-10.3%	3,166	15.6%
JUL	28,600	26,579	27,873	27,325	28,777	29,285	29,278	29,544	26,165	27,193	26,187	25,950	26,538	25,849	26,245	26,785	27,286	27,825	26,549	26,489	25,979	26,083	23,766	25,844	-2,756	-9.6%	2,078	8.7%
AUG	28,600	25,142	27,375	26,237	27,497	27,391	27,952	27,998	24,233	26,171	24,375	23,374	24,763	24,755	25,077	26,141	25,081	25,621	25,857	25,193	24,690	24,831	22,939					
SEPT	24,000	23,294	21,964	21,763	22,396	22,231	23,879	23,796	no data*	22,068	21,151	no data*	21,901	21,590	21,080	21,428	22,033	23,207	23,325	23,246	17,474	22,170	22,402					
OCT	20,500	20,038	20,511	19,921	19,969	19,866	20,521	20,371	no data*	19,576	19,640	no data*	18,350	18,189	18,873	19,024	19,519	20,497	19,772	19,823	14,307	17,782	19,577					
NOV	20,000	no data*	18,643	18,430	no data*	18,220	19,652	18,892	no data*	19,076	17,930	no data*	17,853	17,531	18,910	no data	no data	17,390	17,790	17,910	16,431	16,805	16,483					
DEC	25,200	24,743	22,847	22,394	no data*	22,880	24,882	22,449	22,567	21,983	21,038	20,376	21,986	23,049	24,788	no data	no data	22,524	22,298	22,905	22,066	21,597	20,146					
ANNUAL MONTHLY TOTAL	284,100	255,389	275,557	269,672	231,441	273,845	282,292	281,040	198,394	267,844	258,499	193,989	256,211	237,315	263,035	220,109	221,875	268,932	266,349	264,975	234,926	253,260	227,144	146,860	-18,940	-6.7%	21,263	9.4%
ANNUAL MONTHLY AVERAGE	23,675	23,217	22,963	22,473	23,144	22,820	23,524	23,420	22,044	22,320	21,542	21,554	21,351	21,574	21,920	22,011	22,188	22,411	22,196	22,081	19,577	21,105	18,929	20,980	-2,695	-11.4%	2,051	10.8%

The numbers highlighted in yellow mean monthly traffic counts exceeded the 1993 levels

Annual AADT 1999 - 2021



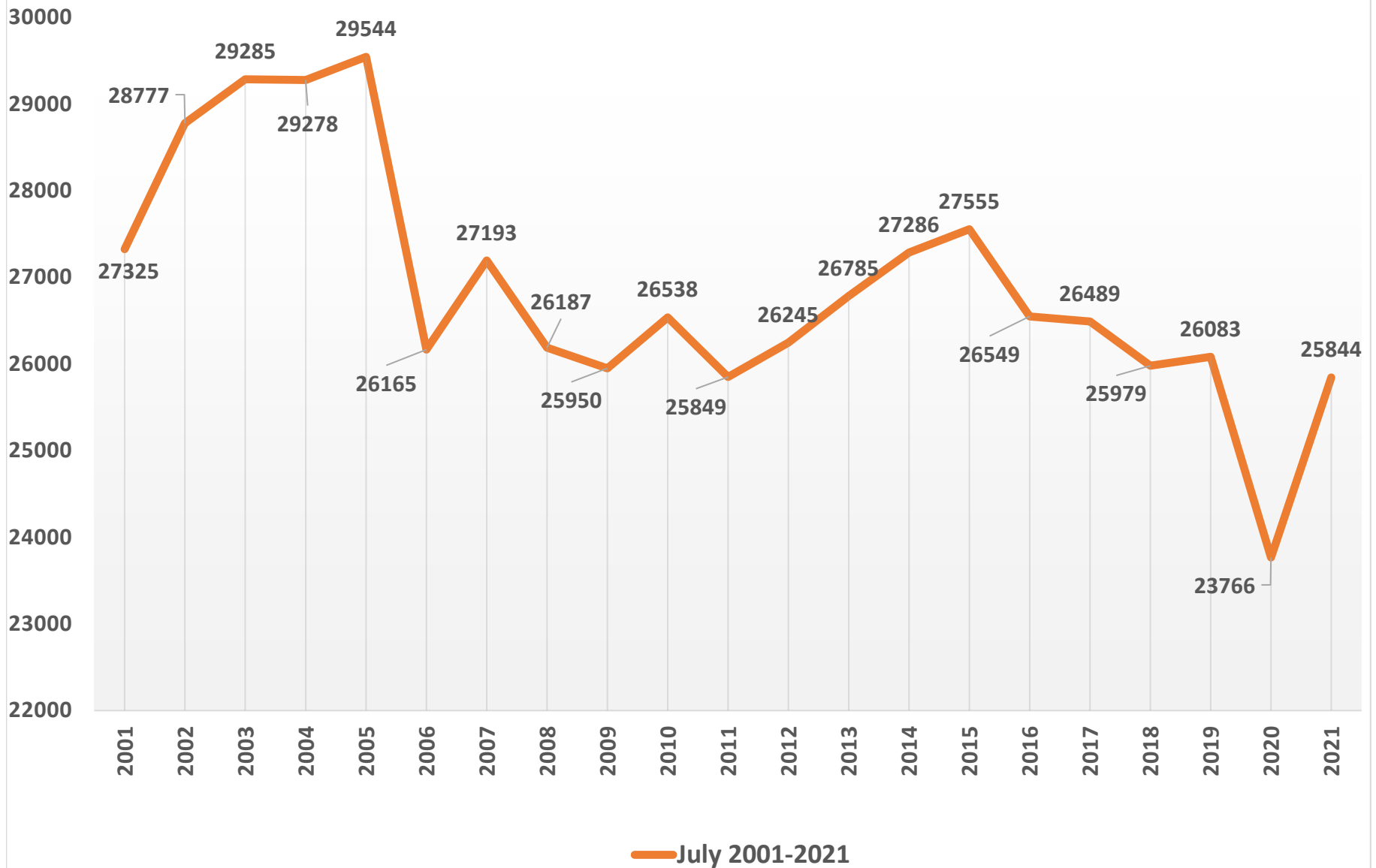
MONTHLY TRAFFIC COUNT COMPARISON 1993, 2019, 2020, 2021 YTD



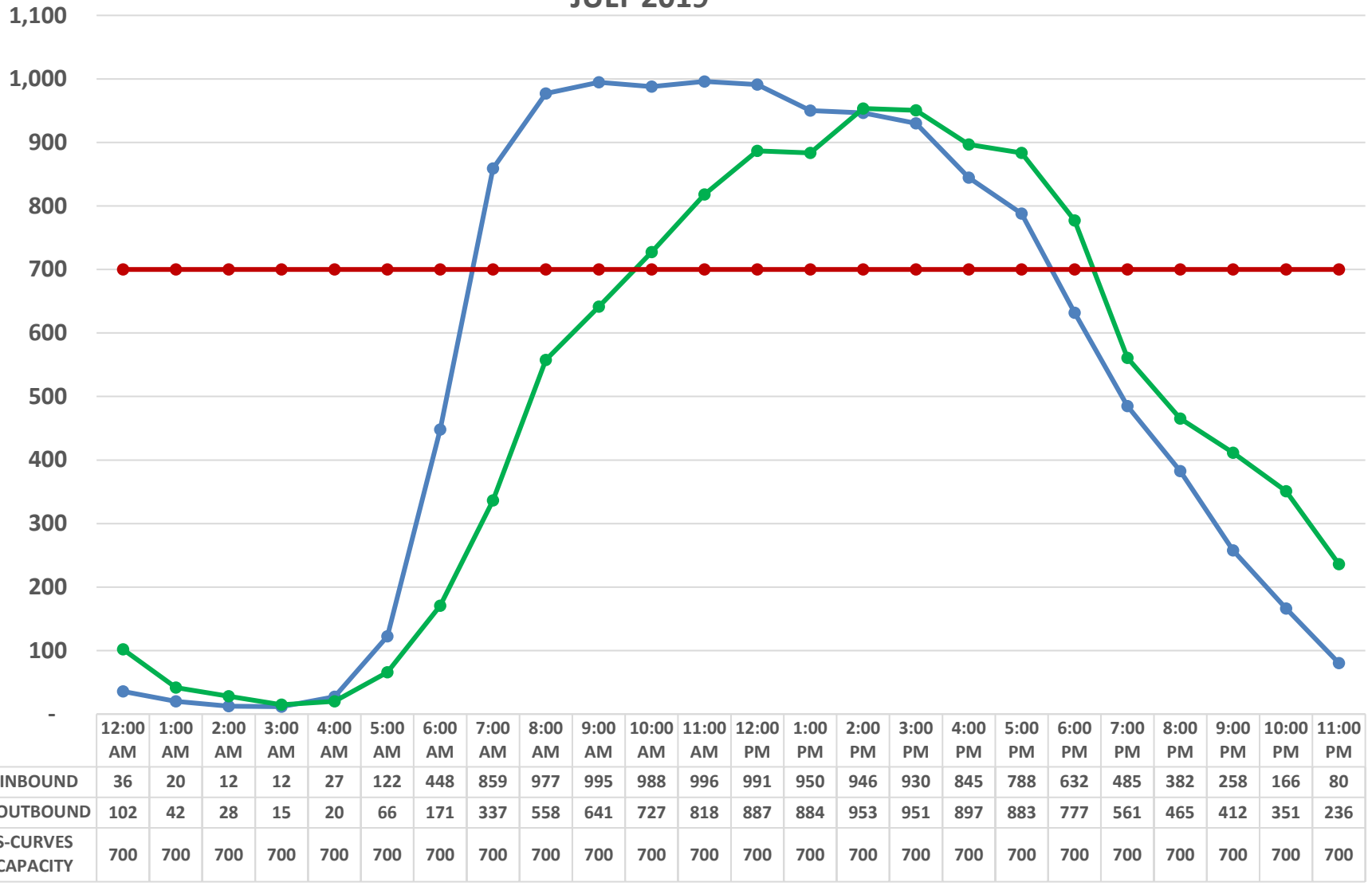
	JAN	FEB	MAR	APR	MAY	JUN	JUL	AUG	SEPT	OCT	NOV	DEC
2019	21,262	21,717	21,792	18,519	17,443	23,259	26,083	24,831	22,170	17,782	16,805	21,597
2020	22,005	21,771	15,501	8,462	13,748	20,344	23,766	22,939	22,402	19,577	16,483	20,146
2021	19,272	20,501	21,793	18,627	17,313	23,510	25,844					
1993 Community Goal	23,800	24,300	24,800	18,800	19,300	26,200	28,600	28,600	24,000	20,500	20,000	25,200

2019
 2020
 2021
 1993 Community Goal

Monthly Average Traffic Counts July 2001-2021

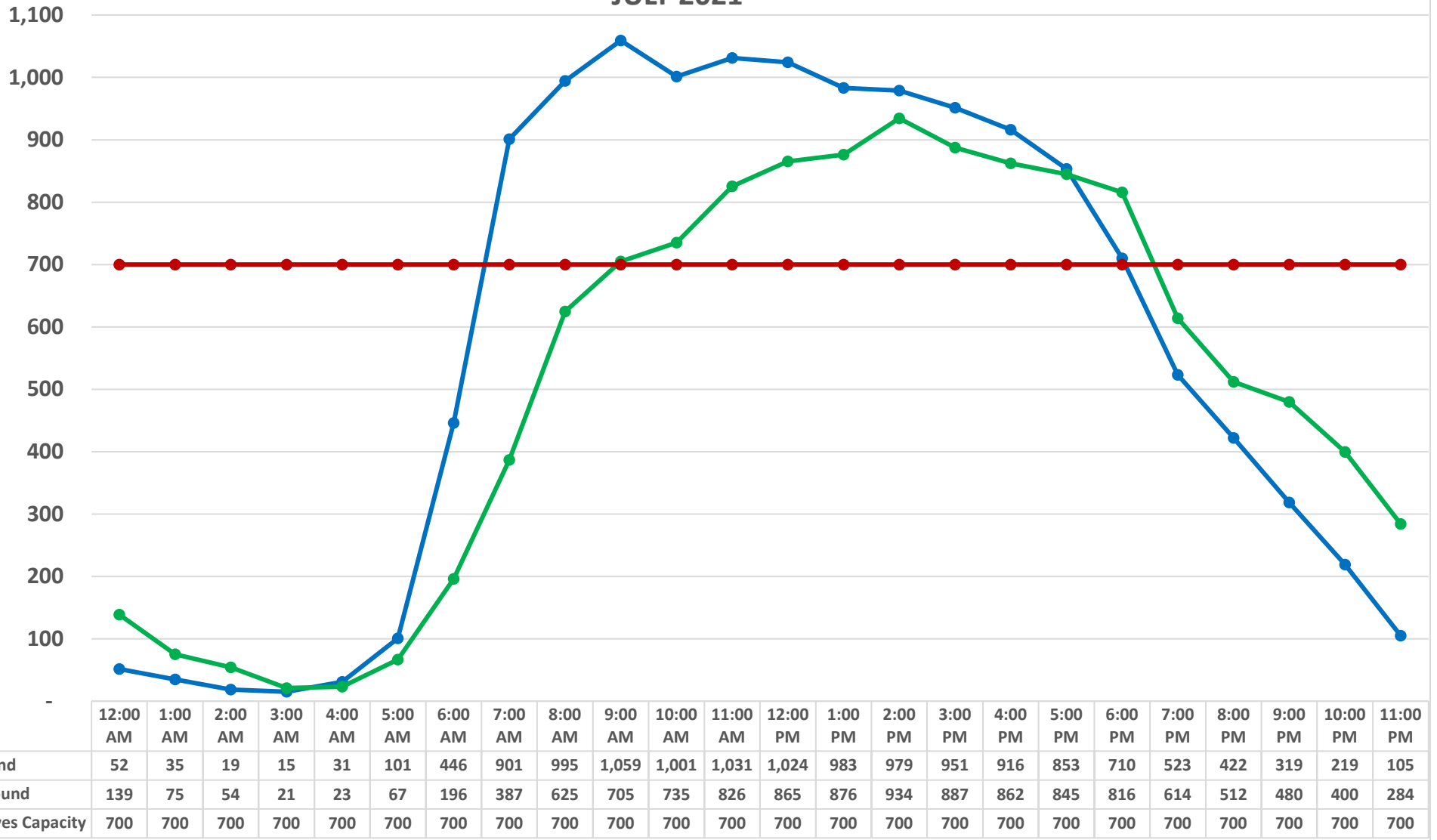


AVERAGE HOURLY COUNTS JULY 2019



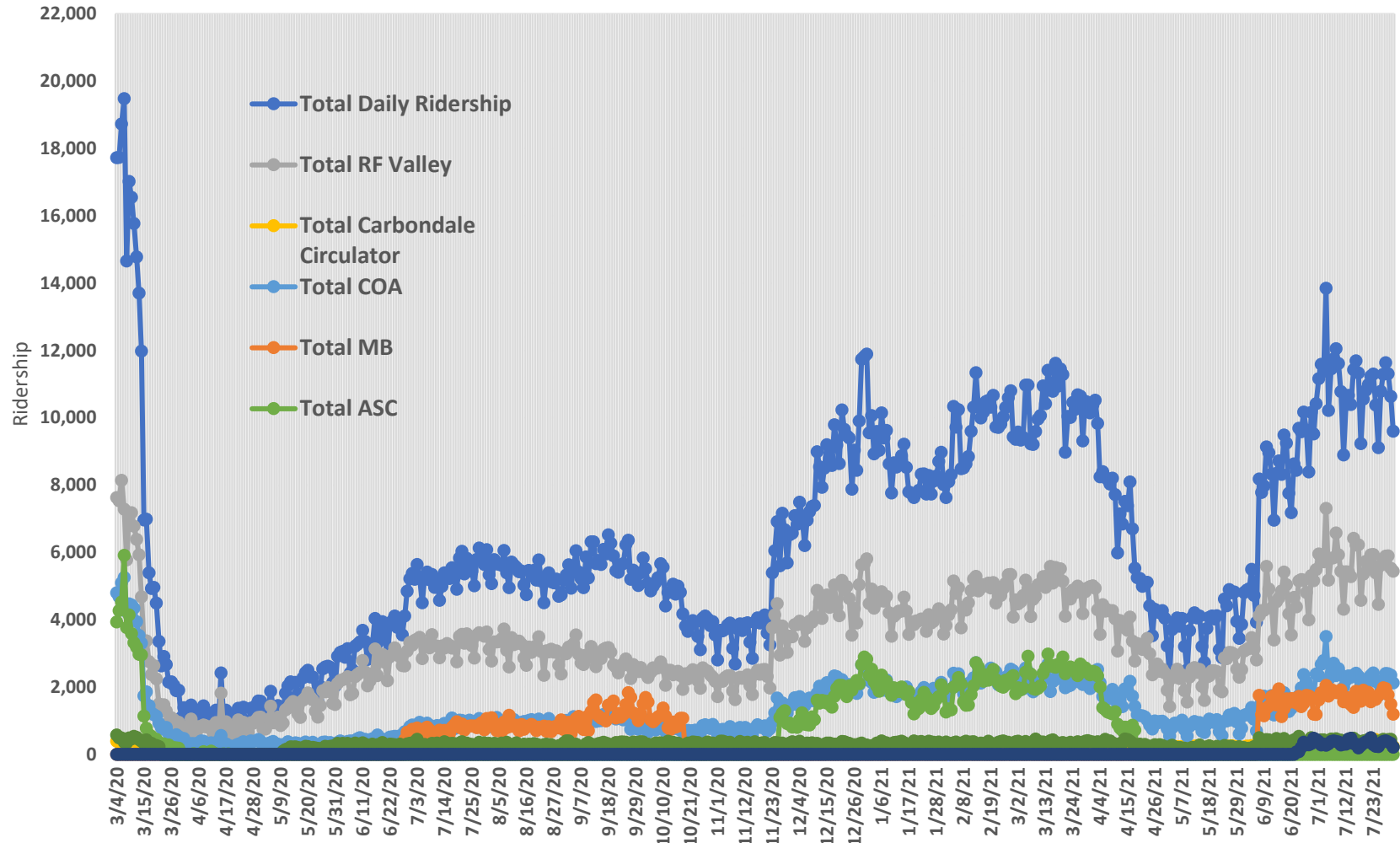
● INBOUND
 ● OUTBOUND
 ● S-CURVES CAPACITY

AVERAGE HOURLY COUNTS JULY 2021

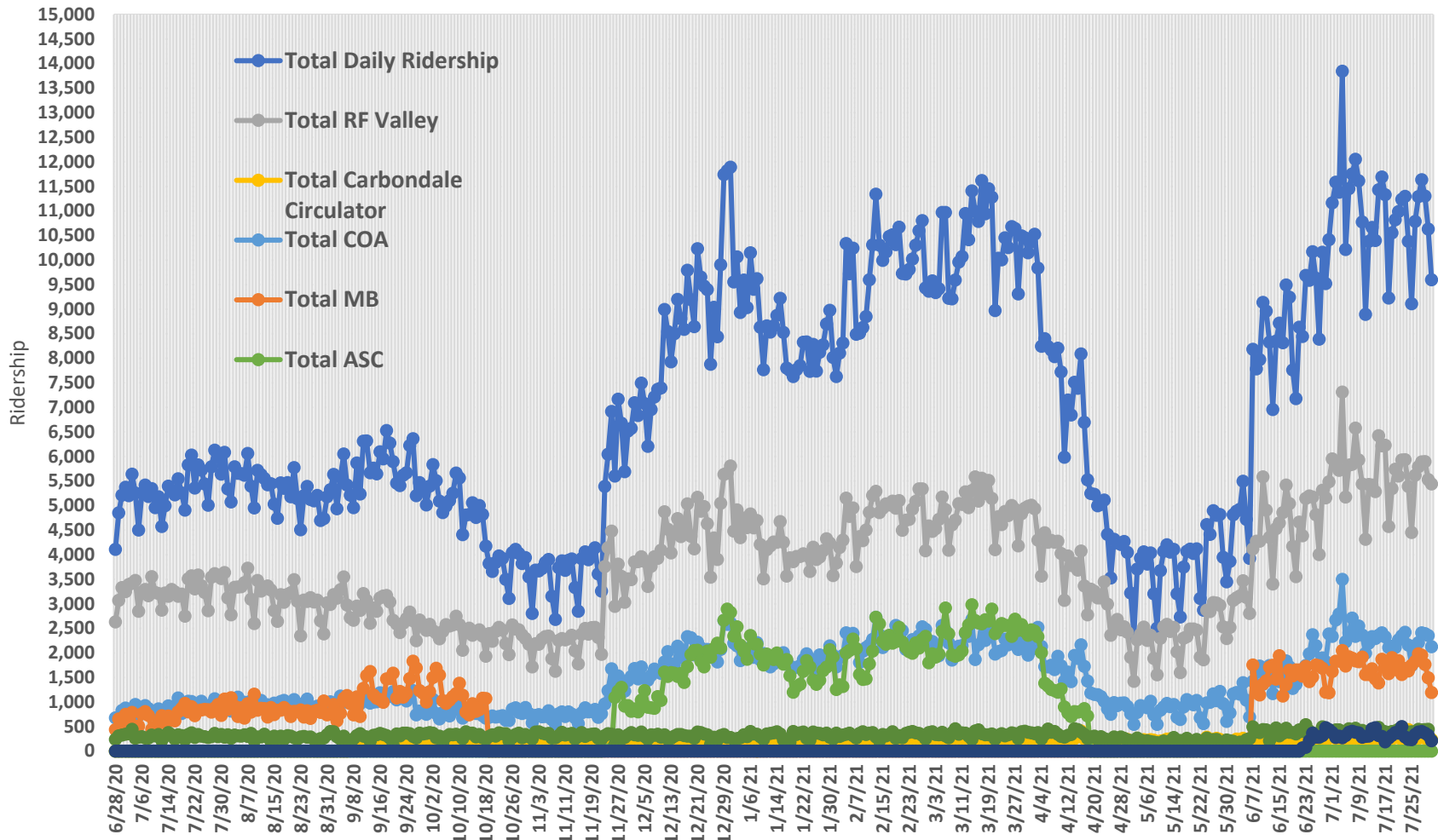


●— Inbound
 ●— Outbound
 ●— S-Curves Capacity

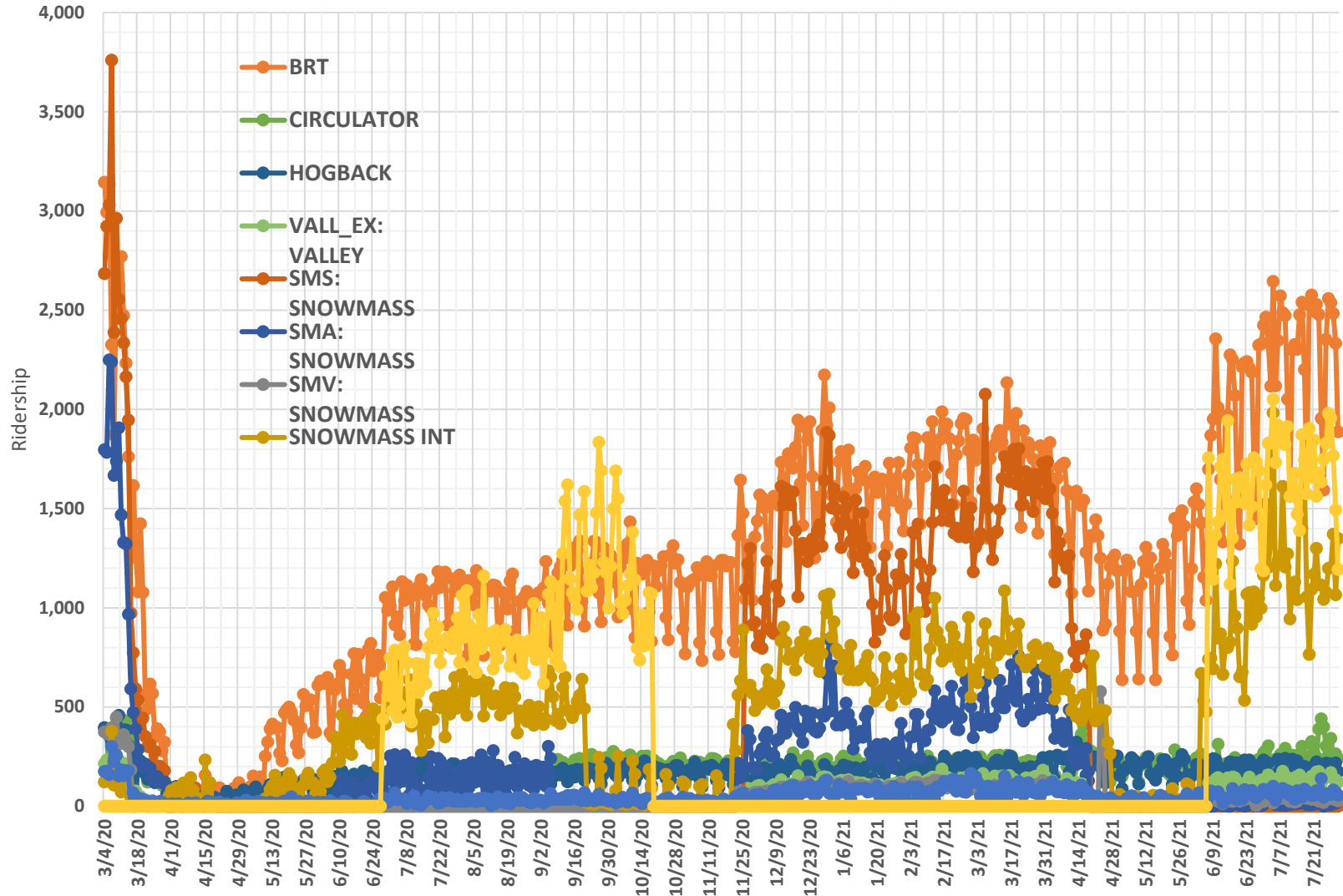
RFTA All Services: Daily Ridership (Preliminary)



RFTA All Services: Daily Ridership (Preliminary) June 28, 2020 to current



RFTA Regional Services: Daily Ridership (Preliminary)



RFTA COA Services: Daily Ridership (Preliminary)

