



Town Hall Council Chamber at 525 San Anselmo Avenue, San Anselmo CA 94960 or via Zoom:
<https://us02web.zoom.us/j/89524900305>

Open Space Committee Agenda

Wednesday, April 17, 2024

7:30 PM

1. CALL MEETING TO ORDER

2. PUBLIC COMMENT FOR ITEM NOT ON THE AGENDA

The public is welcome to address the Commission at this time on matters not on the agenda. Please be advised that pursuant to Government Code Section 54954.2, the Commission is not permitted to take action on any matter not on the agenda, unless it determines that an emergency exists, or that the need to take action arose following posting of the agenda. Each speaker is limited to 3 minutes.

3. APPROVE MINUTES FROM 3/20/2024

4. BUSINESS ITEMS

4.A Treasurer's report for April 2024

4.B Authorize retention and payment options for Chris Tonry to manage website maintenance and updates

4.C Discussion on placement of benches in open space

[Staff Report](#)

[Attachment 1 - Open Space Bench Policy](#)

4.D Discussion on proposed multiuse trail in Sorich Park

[Staff Report](#)

[Attachment 1 - Sorich Park Trail Proposal from Sandor Lengyel](#)

[Attachment 2 - Sorich Park Multiuse Trail Alignment Alternatives](#)

[Attachment 3 - Sorich Park Multiuse Trail Presentation](#)

4.E Discuss and finalize planning for the 2024 Benefit and online payment options

5. OPEN SPACE COMMITTEE MEMBER UPDATES AND REPORTS FROM SUBCOMMITTEES

6. STAFF UPDATES

7. FUTURE AGENDA ITEMS

8. ADJOURN

In compliance with the Americans with Disabilities Act, if you need special assistance to participate in this meeting, please contact the Town staff at 415-258-4626. Notification at least 48 hours in advance will enable the Town to make reasonable accommodation to help ensure accessibility to this meeting. I hereby certify that this agenda was posted on the Public Notice Bulletin Board outside Council Chambers on Friday, April 12th, 2024.

Declaration of Posting

This Notice is posted in accordance with Government Code §54954.2(a) or §54956. Members of the public can view electronic agendas and staff reports by accessing the Town of San Anselmo website. Under penalty of perjury, this Agenda was posted to the public at least 72 hours prior to the meeting.



STAFF REPORT

TOWN OF SAN ANSELMO

Item #: 4.C.

MEETING DATE: April 17, 2024

AGENDA TITLE: Benches in Open Space

FROM: Tom Bautista, E.I.T., Assistant Engineer
Sean Condry, P.E., Public Works Director

RECOMMENDATION:

1. That the Committee receive a report on the placement of benches in open space.
 2. That the Committee prepare a plan to provide Town staff with a list of preapproved bench locations in open space.
-

BACKGROUND

In an effort to combat ageism and ableism in our community, Public Works would like to add additional benches in parks and open space, especially along the existing trails. Increasing the number of benches along trails will expand the accessibility of Town open space lands and allow for enjoyment by a larger range of users of varying ages and abilities.

The Town of San Anselmo Council Policy 7-1, Attachment 1, "Improvements in Open Space" made effective on November 25, 2019, states that any improvement proposals shall be referred to the Open Space Committee to review and make an advisory recommendation.

DISCUSSION/ANALYSIS

The Sorich Park Master Plan suggests providing resting/seating placed at trailheads and periodically (approx. 400' intervals) along walking and multi-purpose trails, providing adequate social seating opportunities and universal access to basic services and information for mobility impaired park users, and seating should be located at a viewpoint or focus on some object of general interest.

Staff believes further initiatives should be taken to implement these suggestions and make open space more accessible to a larger user base. To streamline the process, staff is requesting the Open Space Committee help create a shortlist of preapproved

Item #: 4.C.

locations for benches. Creation of a list of locations can allow staff to identify locations more easily for benches that both serve the purposes stated in the Sorich Park Master Plan and will consider the recommendations of the Committee.

This list can also help staff in preparation of the new memorial bench program being prepared. Town staff is in the process of revamping the program for donors to contribute money to the Town for new or existing trees and benches. The list of approved locations in open space will assist staff in quantifying and locating benches that would be available through the program.

FISCAL IMPACT

The cost for each bench is approximately \$5000, but many of these could be covered by donors through the memorial bench program.

GENERAL PLAN CONSISTENCY

No General Plan items are applicable to this staff report.

CEQA AND CLIMATE ACTION PLAN CONSISTENCY

Installation of additional benches in Town open space to be CEQA exempt per Section 15301 Class 1 as a minor alteration of existing facilities.

Installation of additional benches is consistent with the Town's Climate Action Plan including T-3 Walking.

ATTACHMENT

Attachment 1 – Town of San Anselmo Council Policy 7-1

**TOWN OF SAN ANSELMO
COUNCIL POLICY**

TITLE: IMPROVEMENTS IN OPEN SPACE	PAGE 1 of 3	POLICY NUMBER 7-1
EFFECTIVE: November 25, 2019	REVISED:	

APPROVED BY COUNCIL ACTION

SPECIFIC SUBJECT: Process and guidelines for benches, picnic tables, and other improvements in Open Space.

PURPOSE

The purpose of this Policy is to supplement Town Council Resolution 3335 (1995) which established the Town policy on memorial gifts and to guide review of donations and improvements proposed in public open space areas.

BACKGROUND

The Town periodically receives requests from family, friends, and colleagues that wish to honor the life of a loved one through a memorial or commemorative donation. The Town also seeks to maintain existing improvements in open space areas, such as picnic tables and signs. The Town wishes to encourage donations and improvements that are well suited to open space areas.

The Town recently established an open space zoning designation but has not yet adopted specific development regulations for open space areas. The Town of San Anselmo General Plan provides that public lands which have public access for nature study, hiking, etc. “are to be left in their natural state, with no improvements more extensive than trails and fire breaks.” (Open Space Element (D)(2))

The Sorich Ranch Park Master Plan, approved on July 27, 1993, provides for some improvements to be made in Sorich Park, including benches and picnic tables.

Town Council Resolution 3335 (1995) establishes the policy on memorial gifts.

POLICY

It is the policy of the Town of San Anselmo to accept improvements in Town open space areas after following the procedures set forth in this policy.

I. APPLICABLE OPEN SPACE AREAS

“Open space areas” shall include all land zoned Open Space (OS) on the Town Zoning Map, which are areas set aside for low intensity, passive recreational purposes, and parcels that are acquired for such purposes in the future:

TITLE: OPEN SPACE IMPROVEMENTS	PAGE 2 of 3	POLICY NUMBER 7-1
---------------------------------------	-----------------------	-----------------------------

II. REVIEW PROCESS

Any person, group, or organization may make application to the Town for placement of an improvement in open space, such as a new bench. The Town Council may approve a fee to cover the costs of processing the request.

Open space improvements will be reviewed on a case-by-case basis. The Director of Building and Public Works (“Director”) shall initially screen donation and improvement proposals to determine if they comply with this policy.

The Director shall refer the proposal to the San Anselmo Open Space Committee. The Open Space Committee shall review the proposed improvement and make an advisory recommendation. Non-memorial improvements proposed for Sorich Park that are found to comply with the guidelines of the *Sorich Ranch Park Master Plan* do not require further review. For all other improvements, an advisory recommendation will be made to the Town Council.

The Town Council shall consider the Open Space Committee recommendation and make a final determination regarding the improvement and its consistency with the Town General Plan and Resolution 3335 on memorial gifts.

III. REVIEW CRITERIA

- A. Native trees are encouraged over physical improvements (benches, picnic tables).
- B. Applicants must suggest a location for the proposed improvement. The Town prefers improvements within developed areas and not on trail sides or other locations outside of developed areas. However, nothing prohibits the Town from considering proposals for other locations. Such proposals must be approved by a majority vote of the Open Space Committee, considering factors such as the following:
 - a. Will serve to encourage use of open space by all ages, such as a bench located to serve as a resting place along a trail.
 - b. Is not in a location that will attract activity that would damage natural resources, such as in a location to which visitors would make a new path through a pristine or sensitive natural area.
 - c. The location offers easy observation from commonly used facilities, frequented trails, etc. to reduce the likelihood of negative use.
- C. Benches and picnic tables must be of a size, design and construction which complement the natural features in the area where the bench or table will be installed. Benches made of simple split logs, log rounds and natural boulders are encouraged. Picnic tables constructed of FSC (Forest Stewardship Council certified) redwood or Cedar are encouraged.
- D. Applicants should note that the Town Council policy for memorial or commemorative gifts may require special consideration by the Town Council:

TITLE: OPEN SPACE IMPROVEMENTS	PAGE 3 of 3	POLICY NUMBER 7-1
---------------------------------------	-----------------------	-----------------------------

1. Memorial or commemorative gifts involving the addition of a plaque shall be reserved for persons who have made special contributions to the San Anselmo community, or to the lives of its members.
2. Memorial or commemorative gifts that are placed in prominent locations shall be given special consideration by the Town Council. These locations are reserved for community members whom the Council determines have made extraordinary contributions to the Town, or for occasions when the donation being made is part of a gift plan encouraged by the Town Council.

Preferred Bench Types





STAFF REPORT

TOWN OF SAN ANSELMO

Item #: 4.D.

MEETING DATE: April 17, 2024

AGENDA TITLE: Sorich Park Multiuse Trail

FROM: Tom Bautista, E.I.T., Assistant Engineer
Sean Condry, P.E., Public Works Director

RECOMMENDATION:

1. That the Committee receive a presentation on the proposed Sorich Park Multiuse Trail project.
 2. That the Committee vote in support or opposition of the proposed project.
 3. If the Committee votes in support of the project, that the Committee votes on a preferred alignment.
-

BACKGROUND

Tom Boss, who is with Marin County Bicycle Coalition (MCBC), in 2018 asked the Town to look into a multiuse path through Sorich Park. Public Works walked the area with Tom at the time but with limited funds and staffing the idea did not get implemented. However, at their April 19, 2023 meeting, the Bicycle and Pedestrian Advisory Committee (BPAC), received a presentation from Sandor Lengyel of the MCBC about a proposed project to create a multimodal trail through Sorich Park to connect San Anselmo and Terra Linda, Attachment 1. Currently, no bike legal option exists through Sorich Park. A multimodal trail through Sorich Park would allow connectivity to the Marin County Parks Department's Memorial Trail Improvements in Terra Linda as well as easy access to northern San Rafael.

At their June 14, 2023 meeting, the BPAC voted in support of the project and for staff to look into Alignment Alternative A, Attachment 2, – widening the existing Sorich Trail to upgrade for multimodal usage - from the presentation.

At their September 25, 2023 meeting, the Climate Action Committee (CAC) received a presentation on the proposed project and voted in support of the concept but did not vote in endorsement of a specific trail route or design.

Item #: 4.D.

At their March 4, 2024 meeting, the Parks and Recreation Commission (PRC) received a presentation on the proposed project and voted in support of the concept and for Alignment Alternative A as their preferred alignment.

In addition to BPAC, CAC, PRC, and the Open Space Committee, Public Works plans to bring this same presentation to the Planning Commission and a community meeting to garner input on the project before ultimately presenting the proposed project along with a summary of each committee's and the community's feedback to Town Council for ultimate guidance on how to proceed.

DISCUSSION/ANALYSIS

Currently, there is very limited bicycle connectivity between San Anselmo and Terra Linda, and the existing access is comprised of very steep trails that are inaccessible for most beginner and intermediate cyclists. MCBC has proposed a project to close this gap by creating a multiuse trail through Sorich Park. There are four identified alignment alternatives: Alternative A – existing Sorich Trail change of use, Alternative B – new trail to Cemetery Fire Road, Alternative C – new trail to Ridgewood Fire Road, Alternative D – realignment of Sorich Tomahawk Trail.

In their presentation, MCBC identified Alternative A to be their preferred alignment due to ease and lowest cost of construction. The BPAC voted for staff to look into Alternative A, PRC selected Alternative A as their preferred alignment, and the Marin County Parks Department favors Alternative A as Alternatives B, C, and D would require building new trails instead of improvements on an existing trail.

Some concerns have been raised regarding the widening of the existing Sorich Park trail to allow for bicycles. During previous meetings with the BPAC, the Town received public comment from residents who are concerned that bicyclists will not properly share the trail and will become a danger to hikers with suggestions for the Town to explore alternative routes for bicyclists to have a separate trail from hikers. Marin County Parks has indicated that it would include chicanes or other control devices to slow down bicyclists on multiuse trails as prescribed by common best practices for trail construction.

Another concern that has been raised by members of the public is the anticipation of increased demand for parking as riders may treat the improved multiuse path as a “destination trail”, although both Marin County Parks and members of the public who mountain bike in Marin do not see this as a concern and believe this trail will serve more as a connector than a destination for mountain bikers.

Marin County Parks stated that they would not pursue a trail improvement project on the Marin County Open Space District land abutting Sorich Park without support from Town of San Anselmo to complete trail improvements within Sorich Park. The Town is still open to exploring the other alternative alignments.

FISCAL IMPACT

The fiscal impact of this project is dependent upon which alignment alternative is selected and the nature of the agreement between the Town and Marin County Parks on the division of the work.

GENERAL PLAN CONSISTENCY

A Sorich Park Multiuse Trail Project is consistent with the Town's General Plan including the goals of the Circulation Element.

CEQA AND CLIMATE ACTION PLAN CONSISTENCY

If the project is approved and the Town and Marin County Parks decide to move forward with construction of a trail through Sorich Park, the process would be subject to CEQA analysis.

A Sorich Park Multiuse Trail Project is consistent with the Town's Climate Action Plan including T-2 Bicycling and T-3 Walking.

ATTACHMENT

Attachment 1 – Sorich Park Trail Proposal from Sandor Lengyel

Attachment 2 – Map of Sorich Park Multiuse Path Alternative Alignments

Attachment 3 – Sorich Park Multiuse Trail Project Presentation

SORICH PARK TRAIL PROPOSAL

**Town of San Anselmo
Marin County, CA**



**Prepared for the San Anselmo Bicycle and Pedestrian Advisory
Council
by Sandor Lengyel- San Anselmo Resident**

**February 2020
Resubmitted April 2023**

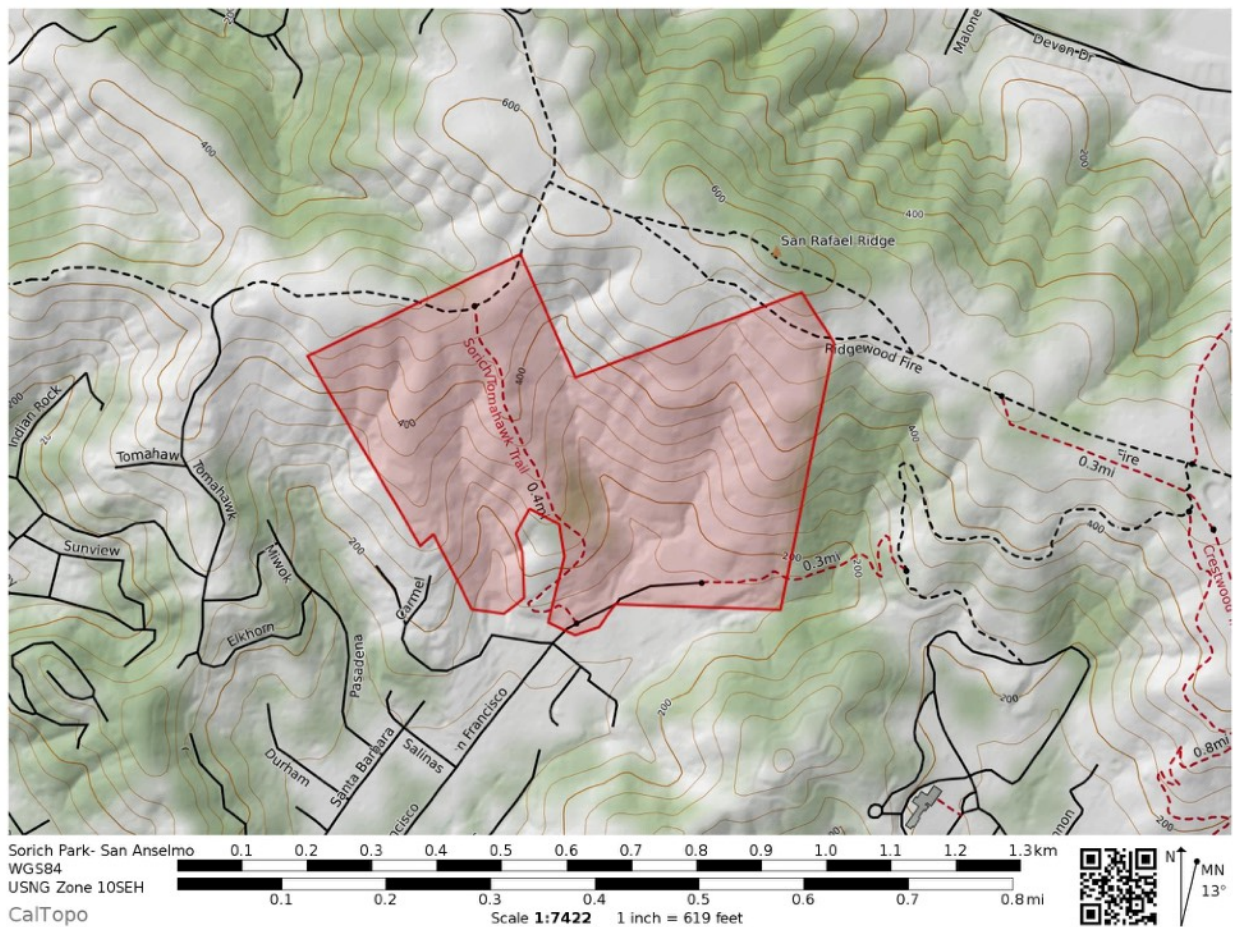
SUMMARY

This document outlines a proposal to create a bicycle legal non-motorized multi use trail from Sorich Park to San Rafael Ridge. This trail would close a connection gap for bicycles, and create new routes for community recreation recreation and transportation.

This trail would mostly benefit hikers/runners/and bicyclists who live in Ross Valley. It is not a destination trail but closure of a decades old connection gap between San Anselmo and San Rafael Ridge.

This is located in Sorich Park at the end of San Francisco Boulevard in San Anselmo.

Project Area Overview



INTRODUCTION

Bicycle connectivity between San Anselmo and Terra Linda and San Rafael Ridge is poor in reality. Bicycle routes are steep, not family friendly, or involve long detours on heavy traffic roads.

This proposal outlines four options to improve connectivity and close connection gaps for bicyclists in San Anselmo.

Alternative A- Change of Use in Sorich Park Trail to Cemetery Fire Road

Alternative B- Trail from Sorich Parking lot to Cemetery Fire Road

Alternative C- Trail from Sorich Parking lot to Ridgewood Fire Road

Alternative D- Re-route and new trail along the Tomahawk Sorich Road corridor

PURPOSE AND NEED

The purpose and need for action reflect the difference between the existing condition and the desired condition for meaningful bicycle connectivity from San Anselmo to the San Rafael Ridge, Loma Alta, and Terra Linda.

Bicycle access from central San Anselmo to San Rafael Ridge is limited to Fawn Drive (Sleepy Hollow), Sun Valley (San Rafael), and Tomahawk. All options are steep and inaccessible to many cyclists. There are currently no beginner/intermediate trail options for bicycles.

There is a need for a bike legal trail in San Anselmo that would accomplish the following goals:

- Closure of connection gap for bicycles from San Anselmo to San Rafael Ridge.
- Benefit Ross Valley residents.
- Create more high quality outdoor recreation opportunities for Ross Valley residents.
- Addresses need for recreational opportunities away from vehicle traffic.
- Link to Marin County Parks Memorial Trail to create a car-free transportation corridor between Terra Linda and San Anselmo.

CURRENT ALTERNATIVES FOR BICYCLES to access San Rafael Ridge

- Sleepy Hollow- Fawn Drive (long detour on Butterfield Road and steep)
- Tomahawk Drive- Tomahawk Fire Road (very steep and inaccessible for most)
- San Rafael- (heavy traffic through San Rafael)
- Tomahawk Sorich Fire Road (highly eroded and inaccessible for most)

PROJECT GOALS

- Closure of connection gap for bicycles
- New recreational and transportation options for Ross Valley residents
- Trail that meets modern erosion control standards.
- Great views of Ross Valley and Mt. Tamalpais
- Minimize construction cost through alignment.

NOTES ON LEGACY “TRAIL ALIGNMENTS”

In evaluating construction of new trails, consideration of the history of legacy trails is important.

Many of Marin’s ranch and fire roads were never built for recreation. Bulldozer operators often followed the path of least resistance, following ridgelines and fall lines (Fall lines run straight down hillsides. They are often unsustainably steep and subject to constant erosion). Unsustainably steep grades and erosive alignments are common in legacy alignments.

Outdoor recreation, erosion control, sustainable trail grades and maximizing trail user experience were not considerations of legacy alignments.

Many ranch roads have unsustainable grades in excess of 20%. By comparison, ideal recreational trail grades range between 5-10%.

This is not an issue isolated to Marin. There are thousands of miles of poorly aligned bulldozer tracks that are grandfathered into poor quality recreational trails.



Location- Sorich Tomahawk Fire Road
Bulldozer ridgeline alignment. Cupping of road
bed channels water down trail. (Approximately
26% grade in this photo).



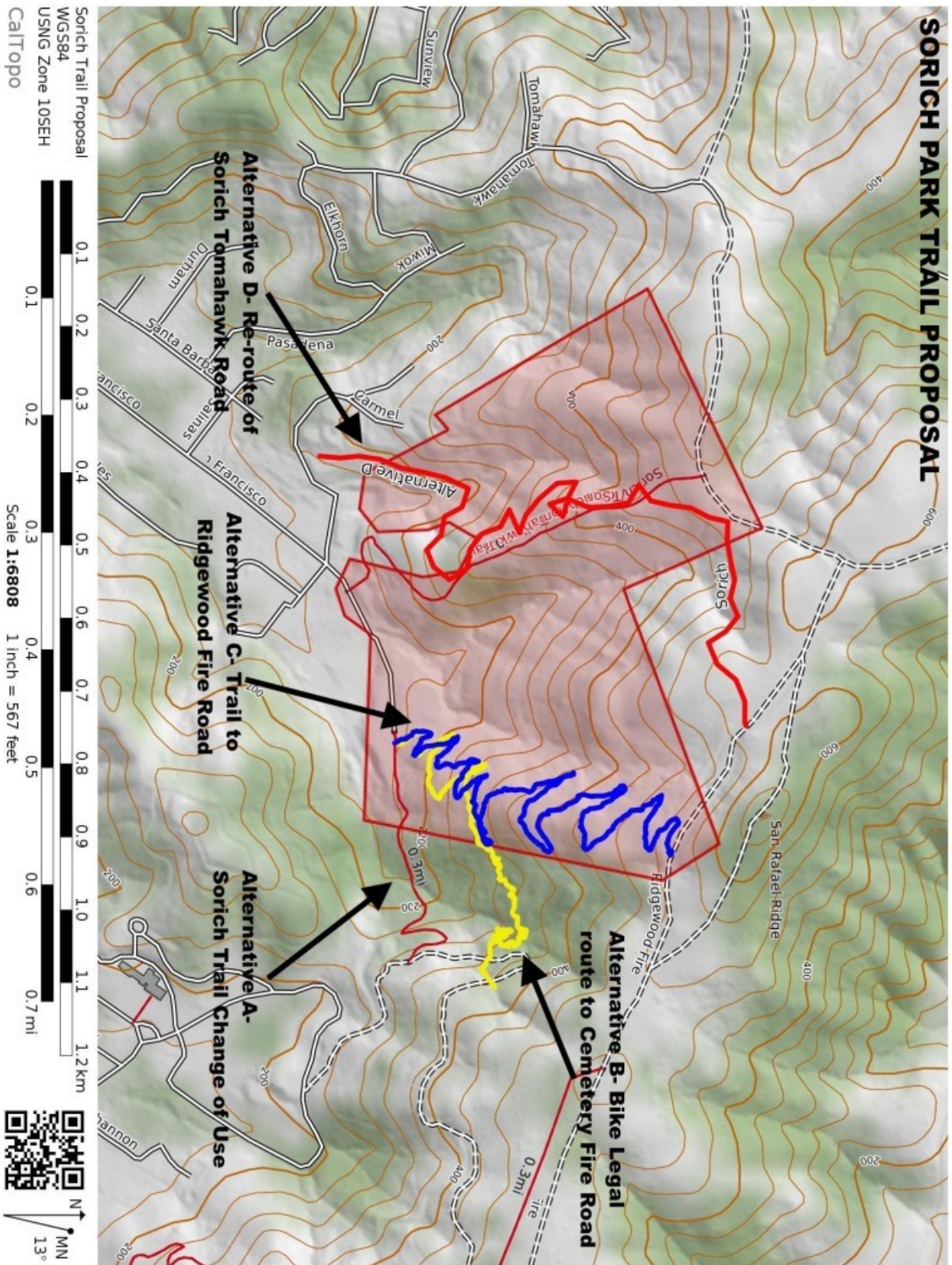
“Cupping” of road
prism and fall line
alignment channel
water onto road
surface.

TRAIL CONSTRUCTION GOALS

- Meet erosion control standards through sustainable alignment and frequent drainage controls
- Maximize trail user experience with a visually interesting alignment
- Avoid waterways and sensitive areas
- Beginner to intermediate difficulty trail
- Bi-directional trail. Trail should be an easy climb and descent for trail users
- Maintain 5-8% average grade
- Maintain erosion controls with frequent grade reversals and outslope
- Avoid the use of stairs and waterbars
- Cost effective- Trail design should minimize cost by avoiding expensive trail features (e.g. engineered bridges)

TRAIL DESIGN AND CONSTRUCTION

- “Best practices” trail building consistent with USFS, BLM, and IMBA standards for non-motorized recreational trails
- Similar width to other multi-use trails in Marin County.
- Drainage accomplished through frequent grade reversals and outslope
- “Half rule” in effect- Trail grade shall not exceed 1/2 the hillside slope.
- Large radius “climbing turns” where feasible
- Trail should integrate with the flow the the land, using natural benches where possible.



ALTERNATIVE A- Sorich Park Trail Change of Use

This option is a Change of Use of Sorich Park Trail to allow bicycle use between the Sorich Park parking lot and Cemetery Fire Road. This is the easiest and lowest cost solution to close the connection gap for bicycles. The Sorich Trail is approximately 0.3 miles long (with 300-500 feet on Town of San Anselmo property). This alternative would be coupled with maintenance and improvements to the existing trail.

Maintenance and improvement would be performed prior to change in use. Most of the trail improvements could be accomplished with volunteer trail crews.

Sorich Park Trail is 48-60+ inches wide. It is similar in width to other multi-use (bike legal) trails in Marin County. Comparable width multi-use trails in Marin include- 680 Trail, Big Rock Trail, China Camp State Park Trails, Octopus Trail, Miwok, Coast View, Dias Ridge, Tenderfoot, Porcupine, and others. Other Marin County multi-use trails of this width accommodate both bicycle, equestrian, and pedestrian traffic.

Alternative A is split between two land managers. The western end is on Town of San Anselmo property and the Eastern end is on Marin County Parks land. Change of use would involve cooperation of two land managers.

Maintenance and improvements are as follows:

- Widening the trail as necessary to allow passing
- Restoration of outslope as necessary
- Installation of grade reversals for drainage above and below switchbacks
- Increase the size of turning platforms at switchbacks as necessary.
- Removal of trench drains and replacement with armored grade reversals as necessary
- Change of signage

Alternative A is the lowest cost alternative. A Change of Use coupled with improvements to the existing trail would close the connection gap at the lowest cost. No new trail construction would be necessary.

Trail Statistics

Length- 0.3 miles

Average Grade- 9.8%

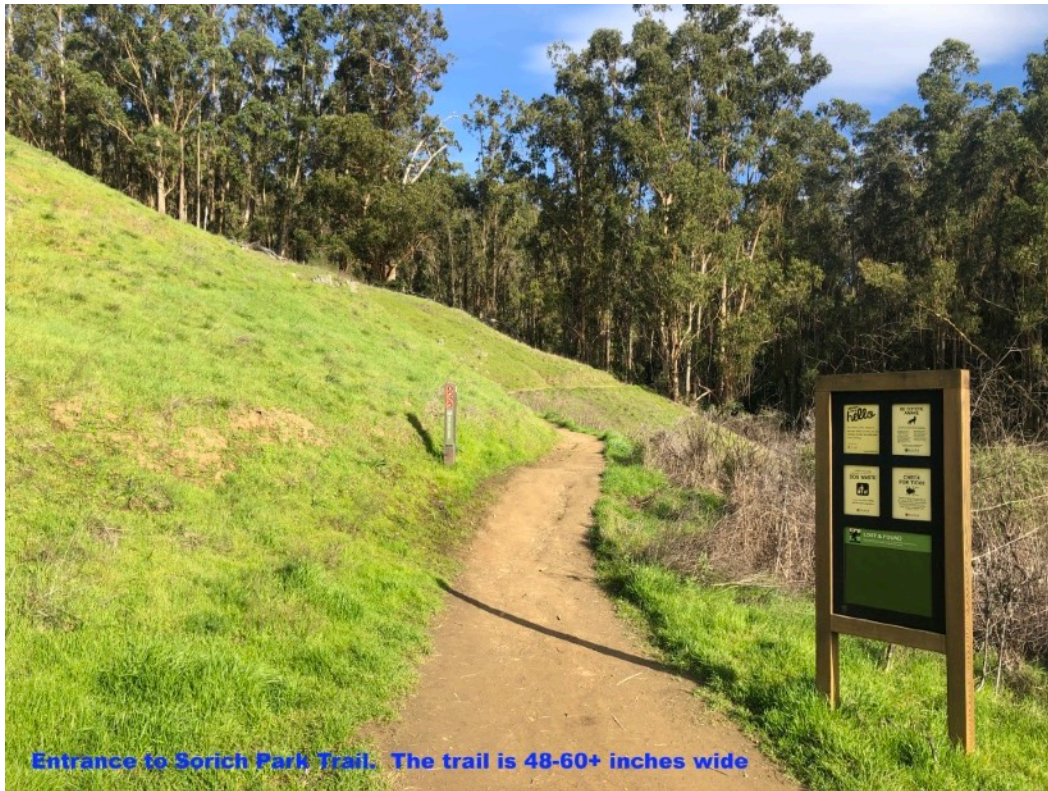
Vegetation

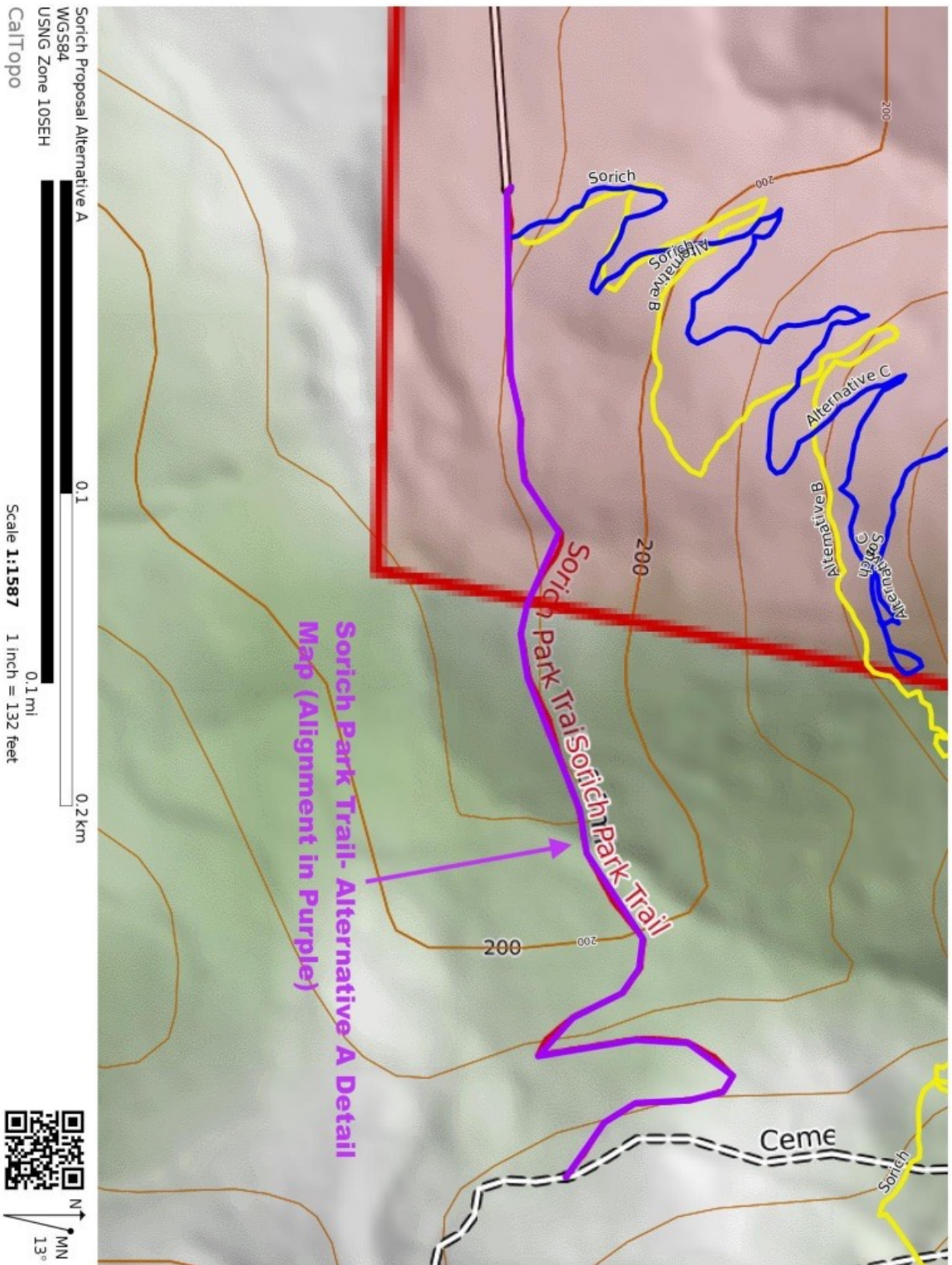
Sorich Park trail is a mix of native grass (approximately 0.1 miles) and a dense stand of eucalyptus, poison oak, and broom.

Waterways and Stream Environmental Zones (SEZs)

Sorich Park Trail has one seasonal stream crossing with an existing bridge. Apart from winter/spring ground water seepage onto the trail surface, there are no waterway or

drainage issues. Cemetery Fire Road has large drainage swales and excellent erosion controls.







ALTERNATIVE B- Trail from Sorich Parking Lot to Cemetery Fire Road

This alternative is a new 0.46 mile long trail at 7% average grade from Sorich Parking lot to Cemetery Fire Road.

This alignment provides a separate multi-use trail from Sorich Parking Lot to separate bicycle and pedestrian traffic on Sorich Park Trail. This trail could connect to Cemetery Fire Road near the old quarry.

While this trail is the shortest distance to close the connection gap for bicycles, it is also a difficult project.

Issues with this alignment include:

- A seasonal drainage crossing that would require two bridges (at the confluence of two creeks).
- A dense stand of eucalyptus, poison oak, and broom.
- This alignment falls on both Town of San Anselmo and Marin County Parks property.

Vegetation

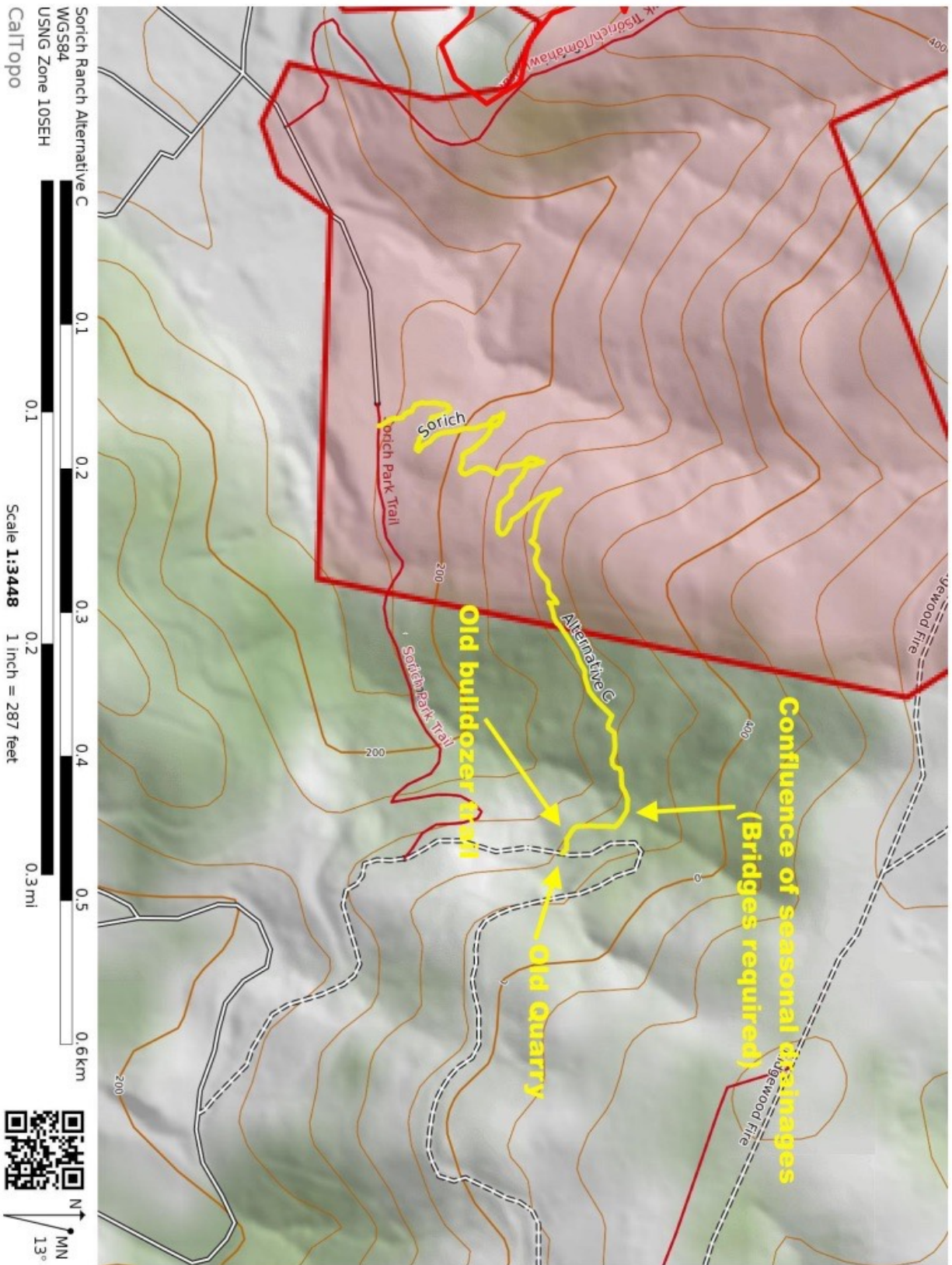
Alternative B is a mix of open grassland (lower section, approximately 50%) and a dense eucalyptus grove. The eucalyptus grove is scheduled for removal by the Marin

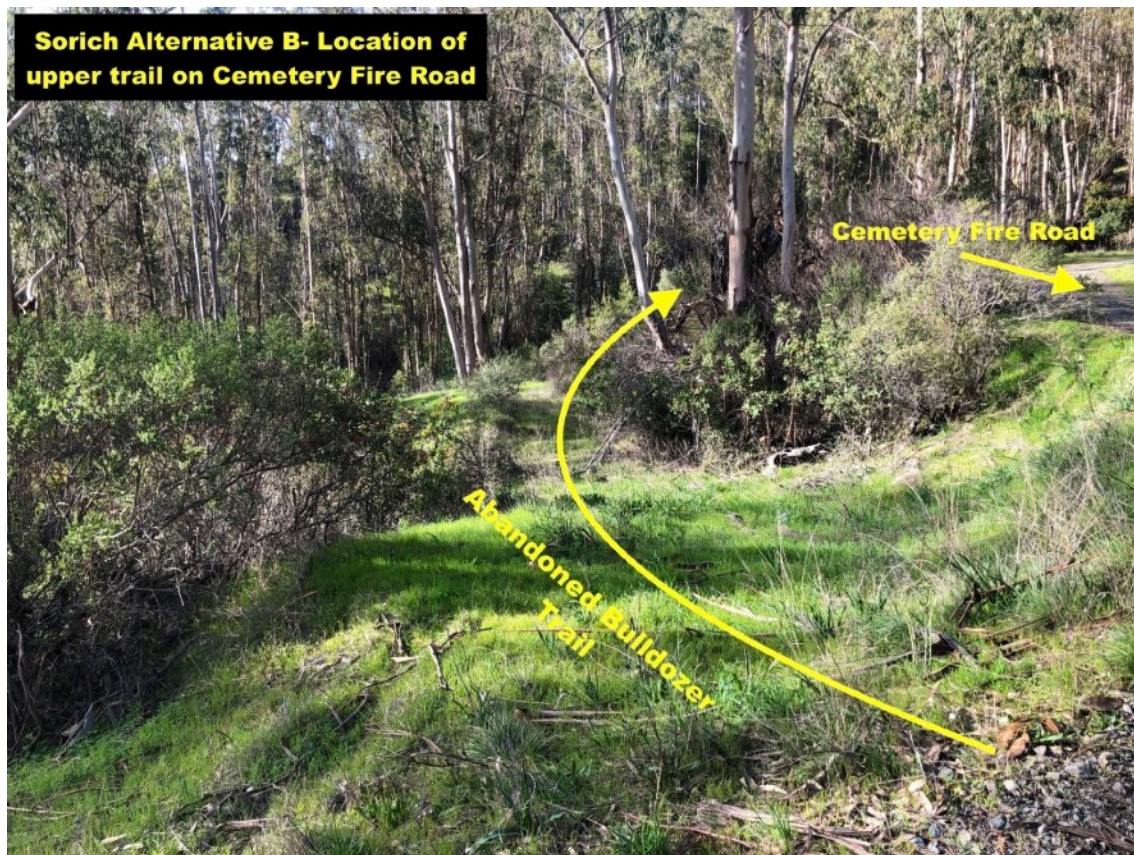
Wildfire Prevention Authority. Removal of the eucalyptus grove would make trail construction much easier.

Trail statistics

Length- 0.46 miles

Average Grade- 7.0%





ALTERNATIVE C- New Trail from Sorich Parking Lot to Ridgewood Fire Road.

This option follows the lower alignment of Alternative B but continues to Ridgewood Fire Road. Alternative C keeps the trail entirely on Town of San Anselmo property. It closes the connection gap and will provide an intermediate level climb to San Rafael ridge for all trail users (7.2% average grade).

This alignment avoids crossing drainages and seasonal waterways. The trail corridor is entirely native grass with light brush.

Alternative C is a visually stunning alignment with continuous views that would provide new recreational opportunities for Ross Valley residents.

Proposed use of this trail is for bicycle and foot traffic only. Equestrian use is currently permitted on Sorich Park Trail/Cemetery Fire Road. This would provide separation of bicycle and equestrian traffic.

This is the preferred alternative for the following reasons:

- Avoids drainages and seasonal waterways
- Eliminates the need for high cost trail features (e.g. bridges)
- Keeps the trail entirely on Town of San Anselmo Property mitigating two separate permitting processes
- Trail is routed away from homes
- Requires no cutting of trees and minimal brushing
- Visually stunning alignment! Continuous views of Mt. Tamalpais and Ross Valley.
- Interesting natural features
- Open sightlines will help mitigate user conflict.
- Upper end of trail uses an existing social trail (an abandoned bulldozer trail)
- Existing trailhead infrastructure (parking, water fountain, trash, etc.)

Vegetation

This alignment is dominated by native grasses. There are a few oak and laurel trees and some light brush. This alignment does not require removal of any trees (though some limbing may be required).

Trail statistics

Length- 0.98 miles

Average Grade- 7.2%

**Sorich Alternative B- Trail alignment and vegetation.
Trail alignment runs through dense stand of eucalyptus and
poison oak**



ALTERNATIVE D- Realignment of Sorich Tomahawk Fire Road.

This alternative involves a realignment of Sorich/Tomahawk Trail to a recreational trail that meets modern grade and erosion control standards. This project would also decommission parts of the old road. The upper part of the trail would adopt and improve a popular social trail on MCOSD land to make the connection to Ridgewood Fire Road.

The Sorich Tomahawk fire road is no longer needed for fire protection or ranching purposes.

Sorich Tomahawk "Trail" is a legacy fall line ranch/bulldozer road. It has an average grade of 17.7%. Most of the Sorich Tomahawk Road runs in a straight fall line alignment over 20% grade. Most erosion controls have failed. The road prism is cupped and directs water and erosion down the old road. This "trail" does not meet any standards for erosion control or recreational trail alignment.

Additionally, the road runs along the spine of a ridge flanked by two drainages. Slope angle on either side of the ridge runs in the 25-40+% range. There is very little working room to build a properly graded recreational trail.

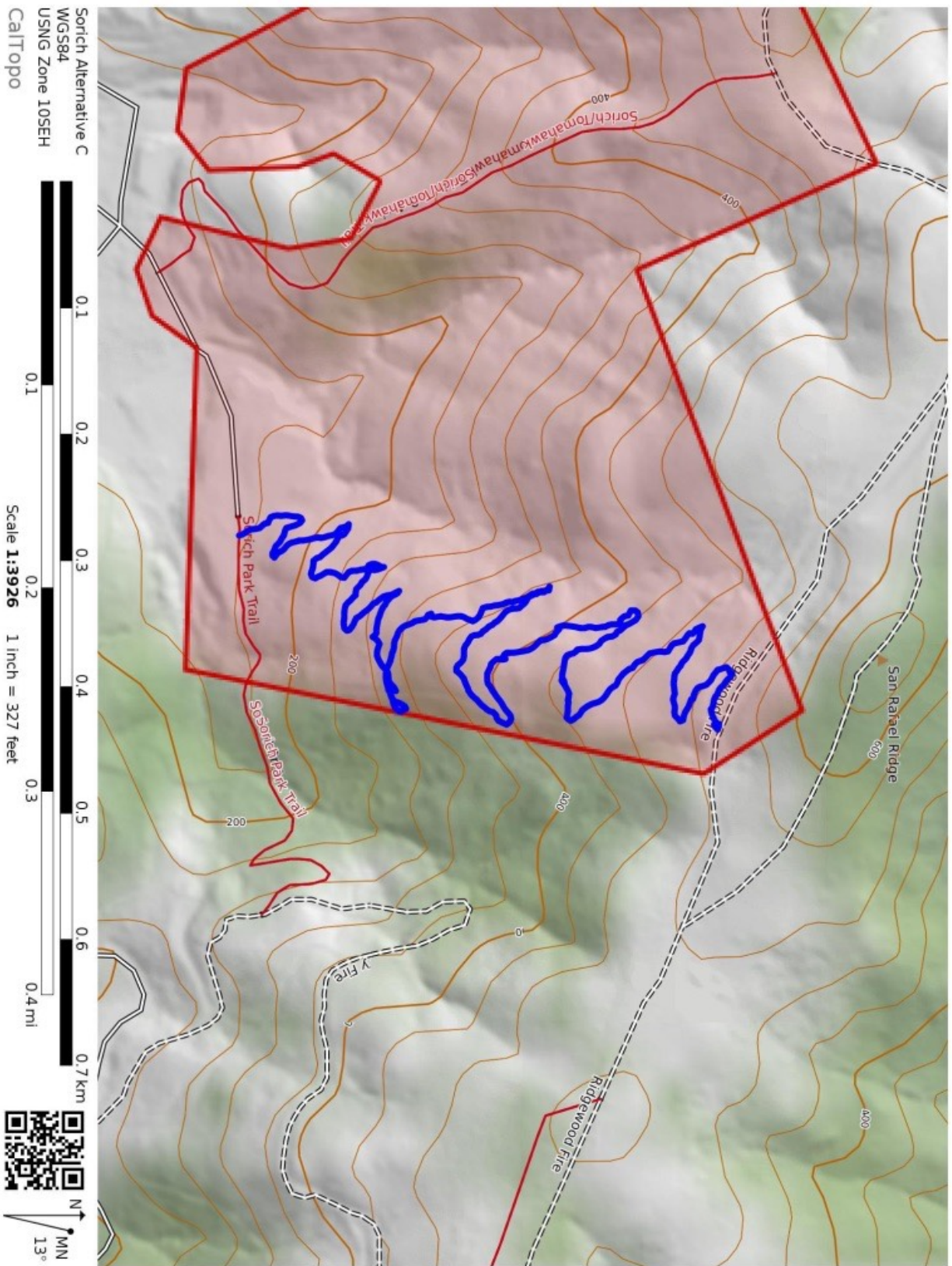
This road is so steep that it is unrideable for the vast majority of bicyclists in the uphill direction. In the downhill direction, the trail is so steep that many cyclists will skid to try to maintain speed control. It is not family friendly.

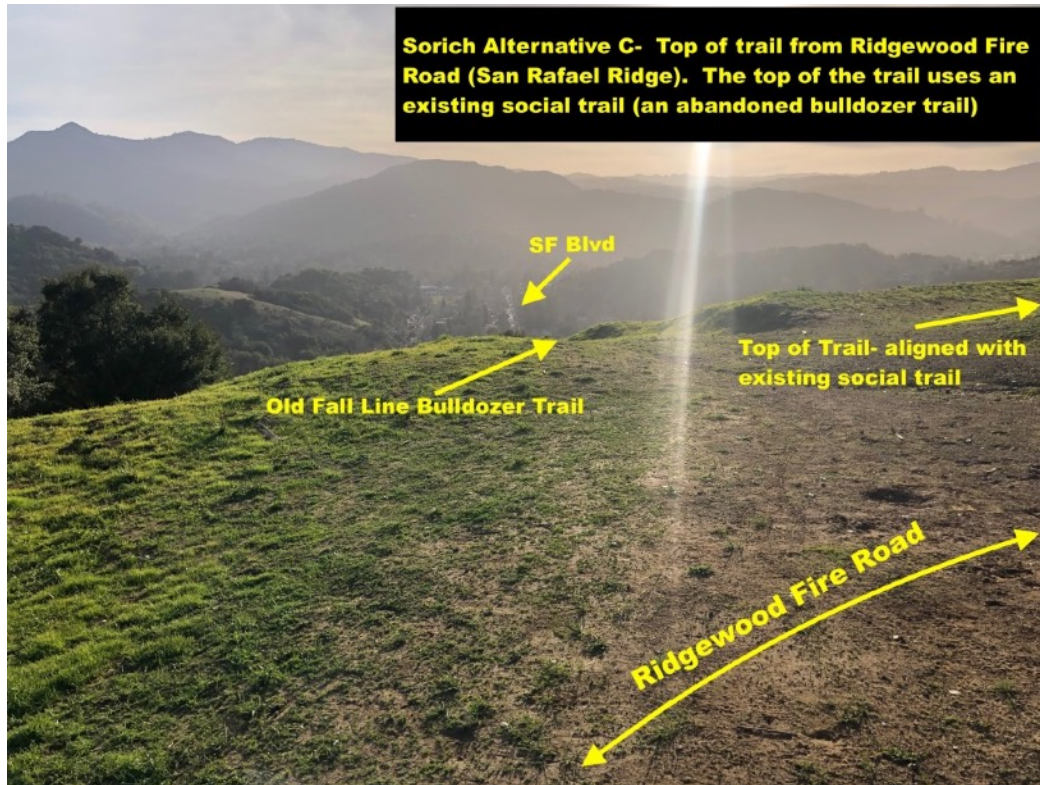
The proposed trail starts on Town of San Anselmo property between 140 and 152 Sacramento Avenue.

Alternative D would require the construction of two bridges and one armored drainage crossing.

Starting the trail here reduces the grade and avoids the stairs at the end of San Francisco Blvd. Stairs are not appropriate for a bike legal trail.

This alignment has several challenges. Because of its proximity to houses on Sacramento, there is the possibility for neighborhood opposition.

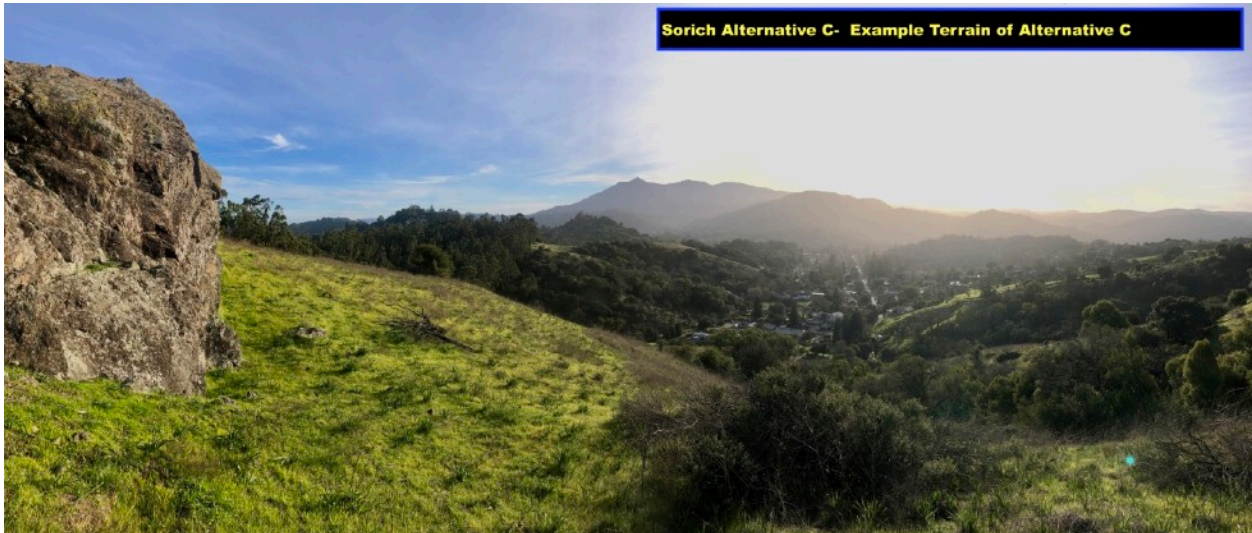




Sorich Alternative C- Terrain example



Sorich Alternative C- Example Terrain of Alternative C



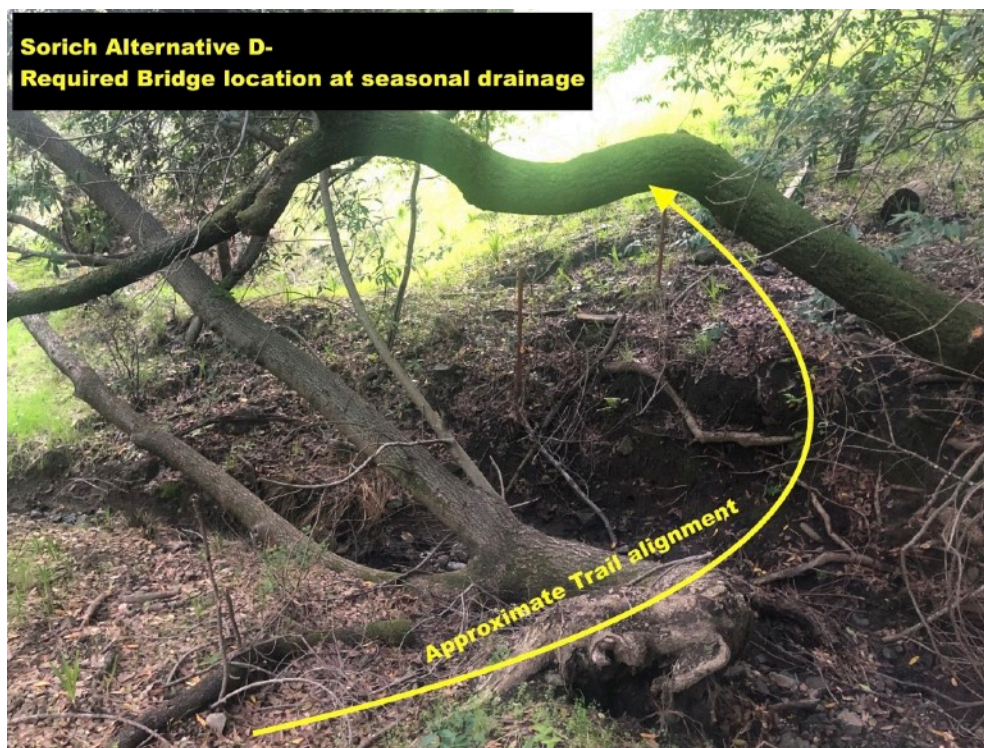
Vegetation

Mix of native grasses, oaks, laurel and brush.

Trail Statistics

Length- 0.84 miles

Average Grade- 9.2%



COMPARISON OF ALTERNATIVES

Comparison of Alternatives					
	Length	Average Grade	Cost	Project Complexity	Other factors
Alternative A- preferred	0.3 Miles	9.8%	Low	Low- Maintenance and drainage improvements only	Easiest, lowest cost. Potential for hiker opposition
Alternative B	0.46 Miles	7%	High- Requires two bridges and significant tree removal	High- Requires engineered bridges and logging operations	Shortest length of new trail construction to close connection gap.
Alternative C- Preferred	0.98 Miles	7.2%	Moderate- Easy building terrain. Trail can be built mostly with volunteer crews	Low- Easy building terrain, single land manager, avoids drainages and waterways	Visually stunning alignment. Open sightlines.
Alternative D	0.84 Miles	9.2%	High- Requires bridges and armored crossings. Difficult terrain with some evidence of prior slope instability	High- Difficult terrain, bridges are required, limited space on ridgeline makes it difficult to meet desired grade.	High potential for neighborhood opposition. Trail is located between homes. Bridges are required for drainage crossings. potential for complex EA due to waterway crossings.

Discussion of Alternative A- Change of use in Sorich Park Trail (Preferred Alternative)

In evaluating all potential alternatives, Alternative A is a clear winner.

This is the easiest and lowest cost way to close the connection gap for bicyclists in San Anselmo. The Sorich Park trail could get a maintenance pass to improve erosion control and drainage and bring the trail to modern multi-use trail standards. Approximately 300-500 feet of the trail is on Town of San Anselmo property. Most of the trail is on Marin County Parks property.

The trail corridor is similar to other bike-legal multi-use trails in Marin.

There is a long history of prior use. At least three abandoned bulldozer trails cross the area, along with evidence of past ranching. There is an existing social trail from Sorich Park Trail to the ridge (fall line trail following the bulldozer trail).

The top and bottom of the trail are located in open areas that could accommodate trail users. Sight lines at both the top and bottom of the trail can be improved. The bottom end of the trail (At the Sorich park parking lot) has existing facilities for trail users. Parking, water, trash collection, and picnic tables are already at the trailhead.

The entire area is scheduled for defensible space and native plant restoration projects (Ridgewood shaded fuel break). The eucalyptus grove is scheduled for removal. This would greatly enhance visibility and sight lines through the area.

Grade of the trail is in the beginner-intermediate range. This trail would be family friendly and suitable for all ability levels. Additionally, the alignment of this trail (lots of turns), makes it a low speed trail. Clear sight lines and a low-speed alignment mitigate user conflict.

Social and traffic impacts

It is unlikely that this would generate excessive parking or overuse concerns. At less than one-half mile in length, the trail is not a destination trail. Trail users are likely to be current Ross Valley residents using the trail to access Loma Alta, Terra Linda or Sun Valley. Bicycle users will likely ride from their homes. It is unlikely that this trail would create a spike in trail usage. San Rafael Ridge is one of the most popular open spaces in Marin County.

Creation of a dedicated bike legal route will reduce unauthorized riding on adjacent trails.

Short Term impacts

Spoil (during the trail maintenance and improvement) will be scattered. Visual disturbance from maintenance and trail improvements should disappear within 1-2 years.

Marin Wildfire Prevention Authority Projects

The (invasive, non-native) eucalyptus grove between San Anselmo and San Rafael Ridge is scheduled for removal through Marin Wildfire Prevention Authority. This project is the “Ridgewood shaded fuel break”.

There will be large scale short term disturbance in the area for restoration of native species and removal of the eucalyptus grove. San Anselmo residents should be prepared for forestry operations in the area. This is an excellent opportunity to make trail improvements linked in timeline with the forest restoration operations.

More information on the project:

<https://www.marinwildfire.org/project/ridgewood-shaded-fuel-break-planning-project-central-marin-zone-share>

Trail Construction Resources-

US Forest Service Trail Construction and Maintenance Notebook

<https://www.fs.fed.us/t-d/pubs/pdfpubs/pdf07232806/pdf07232806dpi72.pdf>

Sustainable Trail Development- A guide to designing and constructing native surface trails

<http://crgov.com/DocumentCenter/View/1430/Sustainable-Trail-Development-Guidelines->

BLM Guidelines for a Quality Trail Experience

<https://www.blm.gov/sites/blm.gov/files/Guidelines-for-a-Quality-Trail-Experience-2017.pdf>

AUTHOR NOTES

I am a San Anselmo homeowner (25 years), and have lived in Ross Valley most of my life. I am a frequent user of Marin’s outdoor spaces as a hiker, trail runner, dog walker, and bicyclist. I have been active in trail work and outdoor stewardship for approximately 30 years. I am a volunteer trail crew leader in Tahoe, where I run large trail building and maintenance projects and work with local and federal land managers. I am currently managing a 5-mile trail building project on Tahoe’s West shore.

My focus in trail work has been in conversion from legacy resource extraction (logging, mining, and ranching) roads to trails built for recreation and sustainability.

Sorich Park Multiuse Path Alignment Alternatives

Legend

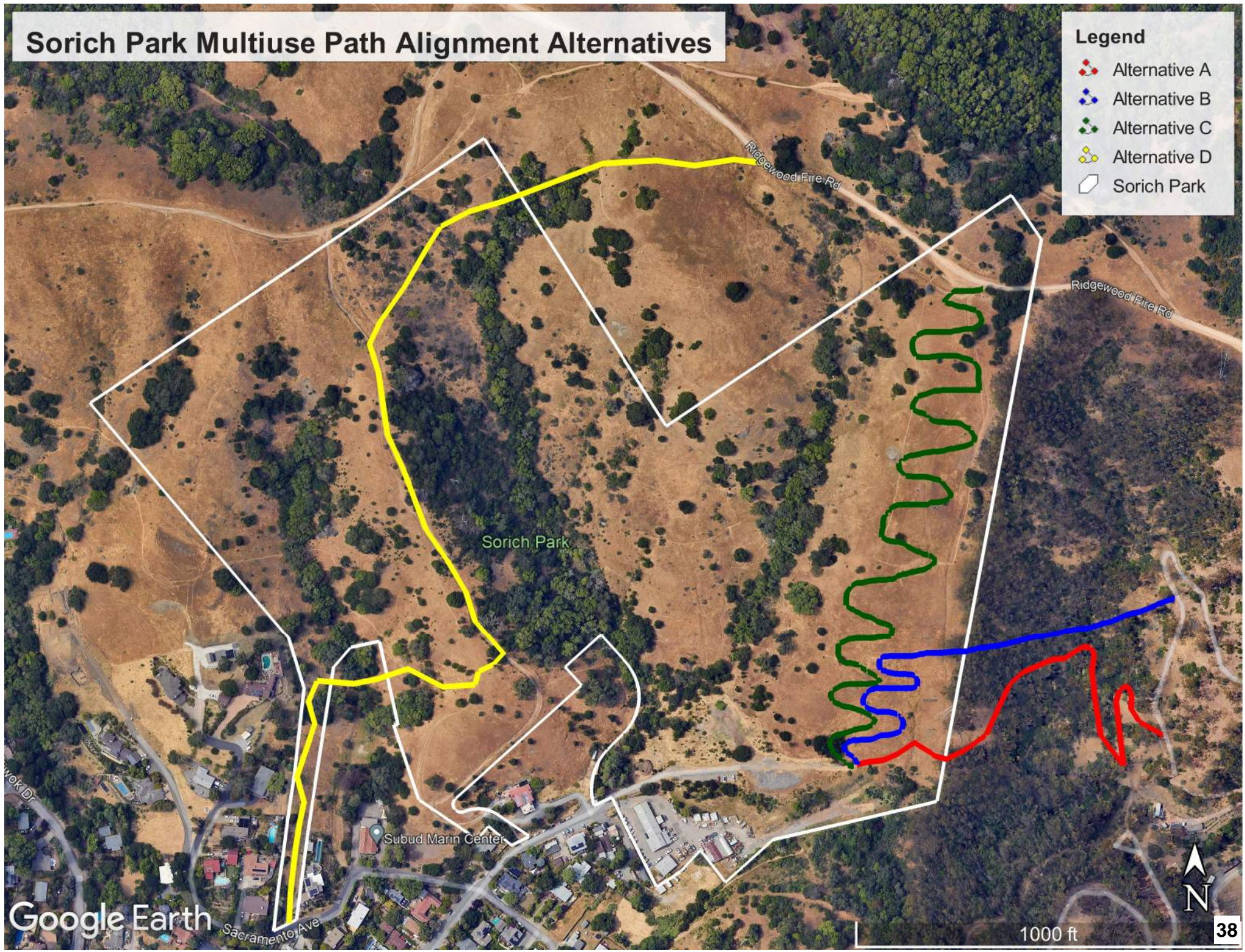
Alternative A

Alternative B

Alternative C

Alternative D

Sorich Park



Town of San Anselmo

**Parks and Recreation Commission Meeting
March 4, 2024
Sorich Park Multiuse Trail Presentation**



Sorich Park Multiuse Path Alignment Alternatives

Legend

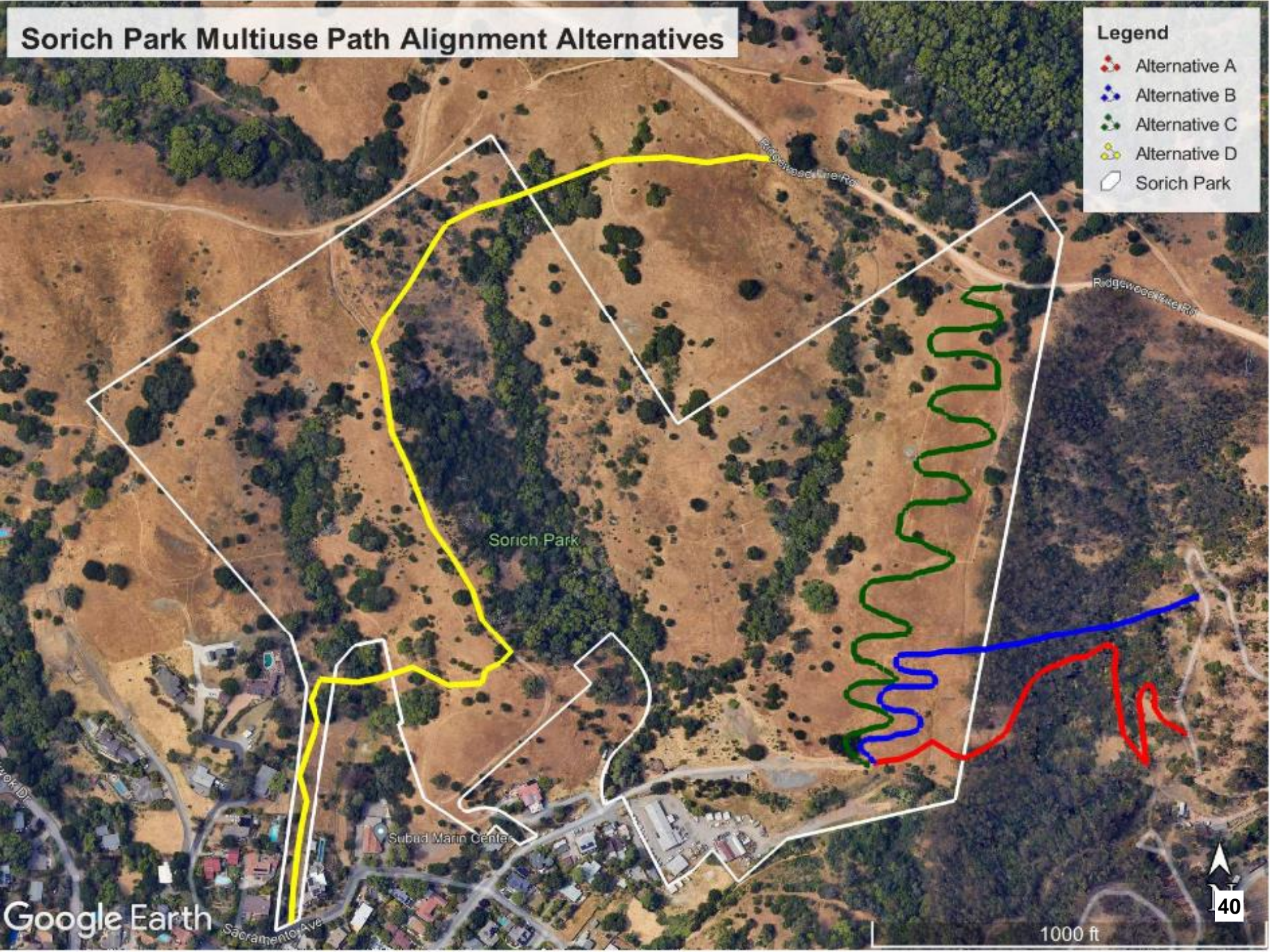
 Alternative A

 Alternative B

 Alternative C

 Alternative D

 Sorich Park



Alternative A – Sorich Trail Change of Use

- Widening existing trail (approx. 300 feet in Sorich Park)



Alternative B – New Trail to Cemetery Fire Road

- Creation of a new trail from the Sorich Park parking lot to Cemetery Fire Road



Alternative C – New Trail to Ridgewood Fire Road

- Creation of a new trail from the Sorich Park parking lot to Ridgewood Fire Road



Alternative D – Realign Sorich Tomahawk Trail

- Realignment of Sorich Tomahawk Trail from Sacramento Ave to Ridgewood Fire Road



Questions?

