

JUSTIN K. AREST
MAYOR

SAMEER AHUJA
KAREN L. BREW
JEREMY A. GANS
DARA B. GRUENBERG
KENNETH L. MAZER
JEREMY WISE
TRUSTEES



ALEXANDRA H. MARSHALL
VILLAGE MANAGER

OFFICE OF THE
VILLAGE MANAGER
VILLAGE HALL
1001 POST ROAD
SCARSDALE, NY 10583
914.722.1110
WWW.SCARSDALE.COM

Village Board of Trustees Work Session Agenda

November 6, 2024
6:00 PM

Meeting Information

A Work Session of the Scarsdale Village Board of Trustees is scheduled for 6:00 PM on Wednesday, November 6, 2024. The meeting will be held in the 3rd Floor Meeting Room in Village Hall. Members of the public wishing to attend the meeting remotely can do so via online link at <https://zoom.us/j/93183703358>, or call into the meeting using 1-929-436-2866 and entering the Meeting ID 931 8370 3358.*

Agenda

- Village Center Parking Presentation



Date: Wednesday, November 6, 2024
Re: Village Center Parking Presentation

COVER PAGE
Village Manager's Office

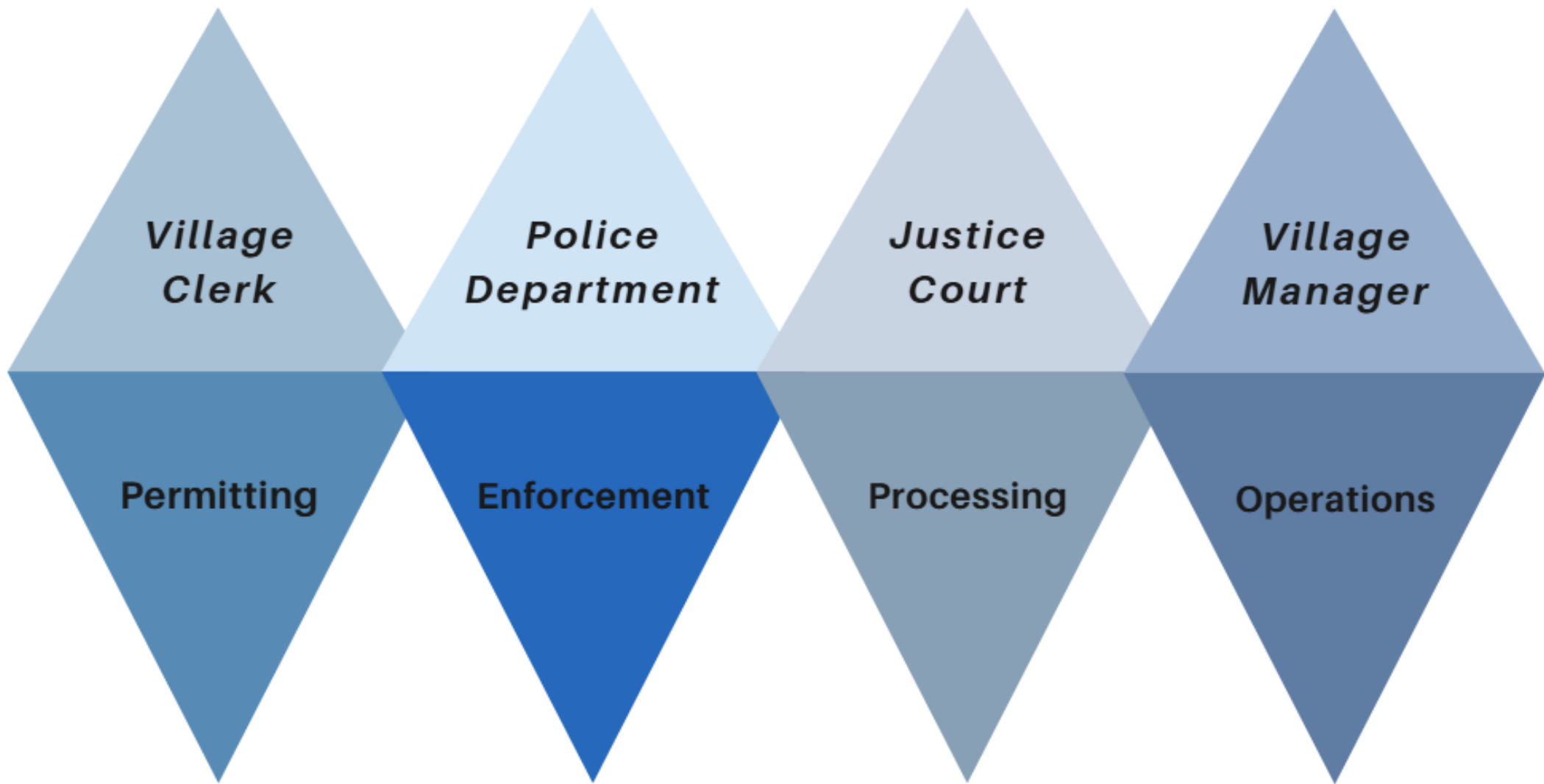
ATTACHMENT(S):

- [Village Center Parking Presentation Slides](#)



Parking Discussion

November 6, 2024



Off-street Parking Permits (data as of October 29, 2024)

Location	# of Permits	# of Spaces	Max # of Permits	% of Max Permits Issued
Station Premium Lot	51	38	51	100%
Christie Place Garage	248	179	248	100%
Christie Place Garage – Merchant	23	23	28	82%
Freightway Garage	341	489	384	89%
Freightway Garage – Garth Road Resident	27	93	126	21%
Freightway Garage – Merchant	29	47	63	46%
Village Hall	6	100	10	60%
Meter Lot	132	88	250	53%
Motorcycle	14	18	23	61%
Total	871	1075	1183	74%

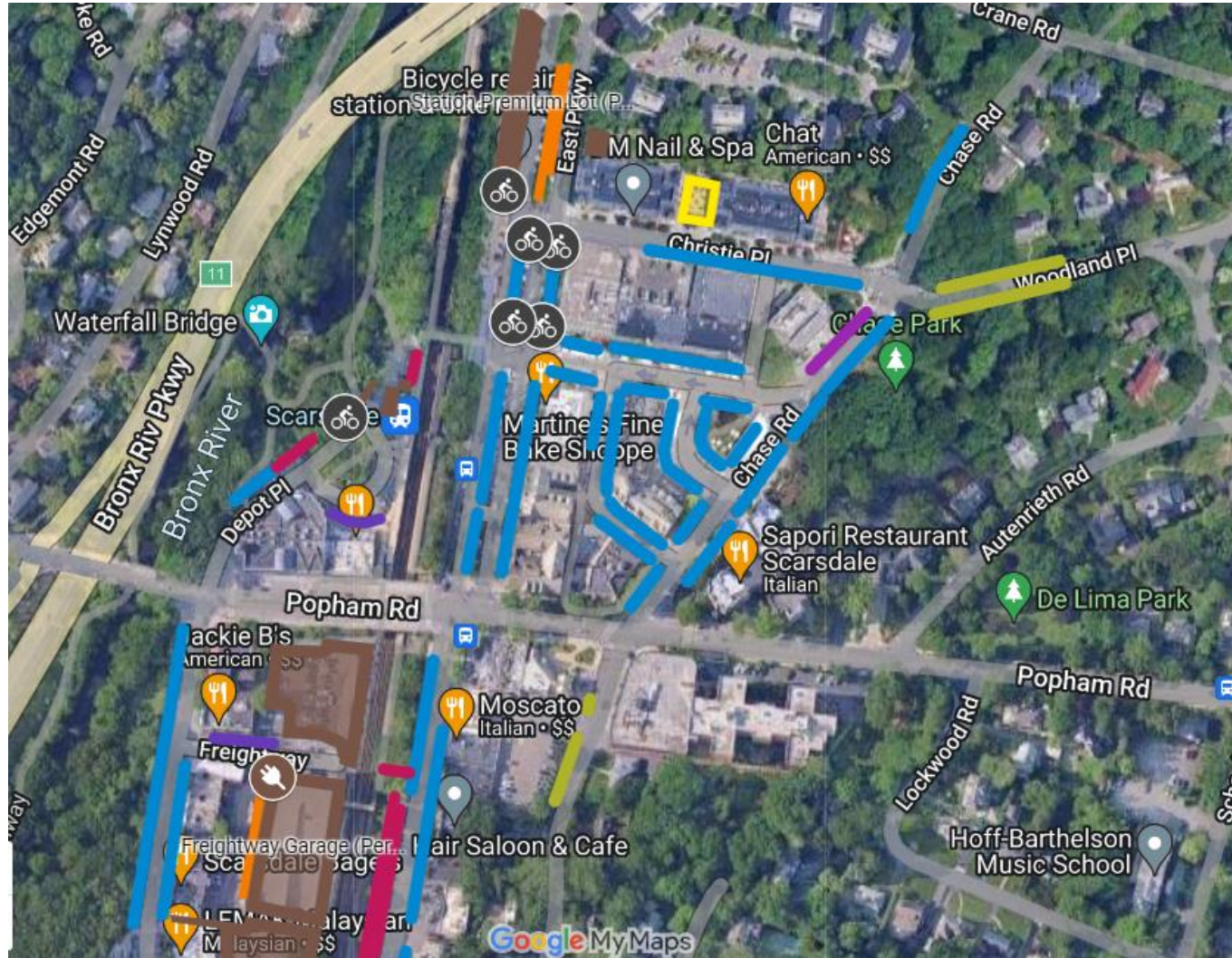
Parking Permits Fees

Location	Annual Resident Fee	Semi-Annual Resident Fee	Annual Non-resident Fee	Semi-Annual Non-resident Fee
Station Premium Lot	\$2,200	n/a	n/a	n/a
Christie Place Garage	\$1,700	\$900	\$2,475	\$1,300
Christie Place Garage – Merchant	n/a	n/a	\$1,200	\$700
Freightway Garage	\$1,100	\$725	\$1,650	\$880
Freightway Garage – Garth Road Resident (Levels 3 & 4 only)	n/a	n/a	\$1,300	\$725
Freightway Garage – Merchant (Level 5 only)	n/a	n/a	\$500	\$300
Village Hall	\$330	\$170	n/a	n/s
Meter Lot (Scarsdale Ave)	\$125 (plus meter)	n/a	n/a	n/a
Motorcycle (Depot Place)	\$200	n/a	n/a	n/a

Off-street Parking Permit Revenue

	Actual 2014-15	Actual 2015-16	Actual 2016-17	Actual 2017-18	Actual 2018-19	Actual 2019-20	Actual 2020-21	Actual 2021-22	Actual 2022-23	Actual 2023-24	2024-25 Adopted Budget
Parking Permits - Christie Place	\$413,392	\$432,797	\$458,138	\$472,300	\$504,948	\$520,787	\$165,104	\$368,006	\$376,736	\$414,454	\$415,000
Parking Permits - Freightway	\$641,139	\$676,244	\$702,696	\$728,346	\$735,932	\$752,303	\$214,256	\$412,451	\$427,534	\$491,716	\$445,000
Parking Permits - Open Lots	\$22,762	\$25,273	\$49,651	\$44,557	\$51,990	\$48,574	\$35,772	\$101,949	\$133,000	\$157,258	\$150,000
Total	\$1,077,293	\$1,134,314	\$1,210,485	\$1,245,203	\$1,292,870	\$1,321,663	\$415,132	\$882,407	\$937,270	\$1,063,428	\$1,010,000

Street Parking Overview



-  8 Hour Parking
-  90 Minute Parking
-  20 Minute Parking
-  2 Hour Parking
-  12 Hour Parking
-  30 Minute Parking

Current Parking Payment Options

- Several hundred single-space meters
- Seven multi-space meters
 - 2 in Christie Place Garage
 - 3 on Scarsdale Avenue in the Meter Lot
 - 2 on East Parkway near Christie Place Garage
- Pango parking app

Meter Revenue (includes single-space and multi-space)

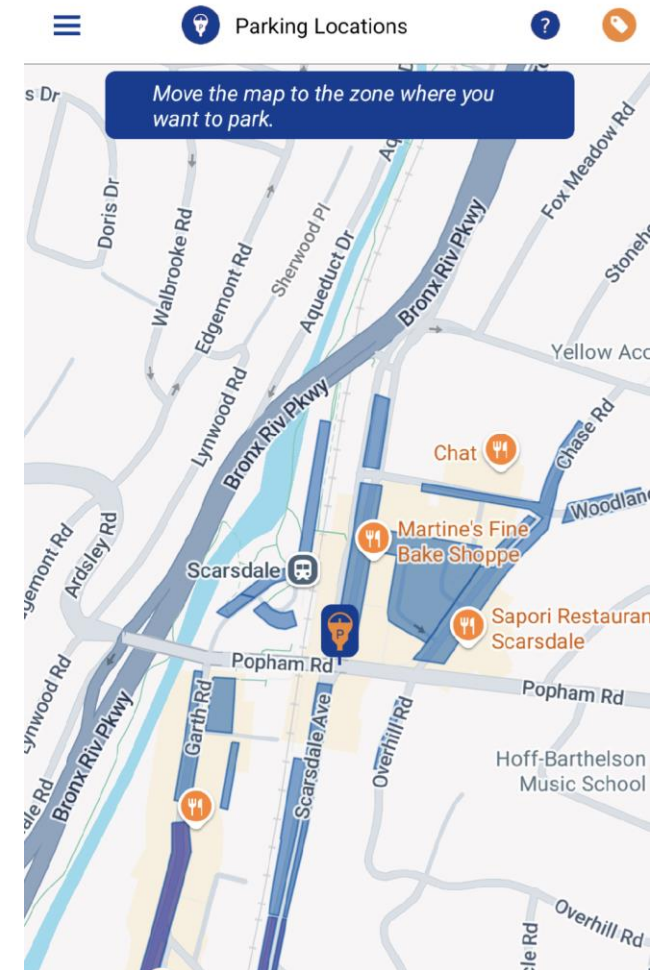
Actual 2015-16	Actual 2016-17	Actual 2017-18	Actual 2018-19	Actual 2019-20	Actual 2020-21	Actual 2021-22	Actual 2022-23	Actual 2023-24	Actual 2024-25 (6/1/24 - 11/1/24)
\$979,935.77	\$944,840.01	\$963,583.85	\$949,413.58	\$716,061.54	\$540,114.52	\$723,698.28	\$739,924.02	\$789,163.15	\$345,615.17

Pango App

Actual 2019-20	Actual 2020-21	Actual 2021-22	Actual 2022-23	Actual 2023-24	Actual 2024-2025 (6/1/24 - 11/1/24)
\$60,976.75	\$114,686.50	\$227,077.50	\$292,400.5	\$363,902.75	\$163,677.75

Pango App

- 18 parking zones in the Village Center
 - 15 for Street Parking
 - 3 for Garage Parking
- 452 individual street parking spaces



Pango Usage – Number of Parking Transactions

Location	Zone	# of Spaces	Actual 2019-20	Actual 2020-21	Actual 2021-22	Actual 2022-23	Actual 2023-24	Actual 2024-25 (6/1/24 - 11/1/24)
Chase Rd (in front of USPS) - 20 Minutes	10584	6	503	1,186	1,818	1,984	2,323	1,036
Chase Rd & Christie Pl - 90 Minutes	10581	62	8,212	13,821	21,938	27,706	35,043	15,632
Depot Place (in-front storefronts) - 30 Minutes	10591	8	447	790	1,366	1,068	1,304	634
Depot Place - 90 Minutes	10592	9	2,174	2,986	5,246	5,124	5,639	2,898
Depot Place Permit - 12 Hours	10590	12	1,230	1,631	2,812	2,708	2,986	1,604
East Parkway - 90 Minutes	10589	70	12,390	23,236	39,396	45,296	51,308	23,352
East Parkway - 8 Hours	10588	34	67	4,546	6,926	9,168	10,834	4,615
Freightway Street Parking - 30 Minutes	10956	4	212	157	260	259	319	116
Garth Road - 90 Minutes	10597	21	3,870	3,598	6,928	8,354	10,952	5,345
Long Lot beside Freightway Garage - 8 Hours	10598	12	1,108	1,017	2,392	3,808	3,824	1,648
Overhill Road - 2 Hour	10595	7	1,080	1,856	2,795	3,085	4,265	2,017
Scarsdale Ave - 90 Minutes	10593	23	2,251	3,895	7,738	10,002	11,353	5,383
Scarsdale Ave Meter Lot - 12 Hours	10594	77	13	1,801	5,049	6,501	8,104	3,546
Spencer, Boniface, Harwood - 90 Minutes	10583	85	14,643	23,292	44,442	56,614	65,757	31,857
Woodland Place - 2 Hours	10580	22	638	1,796	2,801	3,220	4,794	2,361
Total		452	48,838	85,608	151,907	184,897	218,805	102,044

Pango App Usage - Garage

Location	Zone	Actual 2019-20	Actual 2020-21	Actual 2021-22	Actual 2022-23	Actual 2023-24	Actual 2024-25 (6/1/24 - 11/1/24)
Christie Place Garage (Upper Level) – 4 Hour	n/a	1,437	3,618	6,904	6,675	8,775	3,960
Christie Place Garage Handicap (Lower Level) – 8 Hour	10587	0	43	172	181	145	76
Christie Place Garage (Lower Level) – 8 Hour	10599	0	630	2,746	3,471	3,863	1,493
Total		1,437	4,291	9,822	10,327	12,783	5,529

Village Center Enforcement Statistics

Year	Expired Meter	Overtime Meter	No Permit	Backed into Space	Loading Zone	Total Summonses	Amount Due	Amount Paid	Outstanding Balance
2014	11,836	417	1,084	95	27	13,459	\$390,768.00	\$370,923.00	\$19,845.00
2015	16,074	474	1,102	6	19	17,675	\$503,708.00	\$478,288.00	\$25,420.00
2016	14,251	497	1,153	3	18	15,922	\$469,222.00	\$426,252.00	\$42,970.00
2017	12,858	509	1,232	3	21	14,623	\$432,420.00	\$391,535.00	\$40,885.00
2018	13,514	475	1,094	0	27	15,110	\$443,995.00	\$401,760.00	\$42,235.00
2019	9,069	581	982	0	12	10,644	\$296,665.00	\$266,115.00	\$30,550.00
2020	4,432	368	397	0	6	5,203	\$103,535.00	\$92,830.00	\$10,705.00
2021	7,656	241	1,022	0	42	8,961	\$259,110.00	\$183,710.00	\$75,400.00
2022	8,931	53	847	3	21	9,855	\$308,320.00	\$242,980.00	\$65,340.00
2023	8,804	6	854	63	21	9,748	\$307,550.00	\$258,705.00	\$48,845.00
2024	7,952	16	934	47	32	8,981	\$270,230.00	\$199,880.00	\$70,350.00
Total	11,5377	3,637	10,701	220	246	130,181	\$3,785,523.00	\$3,312,978.00	\$472,545.00

Key Parking Issues

- Maintenance of single-space meters
- Outdated paper permit process
- Multiple products that don't integrate well
- Limited information on parking tickets
- Limited functionality for court

Common Parking Complaints

- Single-space meters out-of-order
- Uncertainty regarding parking zones
- Desire for more parking signage
- Ticket issued in error
- Card readers on multi-space meters out-of-order
- Desire for longer street-parking durations

Parking Goals

- Digitize the parking permit process
- Consolidate the number of parking vendors
- Replace single-space meters with multi-space meter payment and app
- Obtain more accurate information about parking usage to guide future decisions

Online Permit Portal

- Elimination of paper processes
- Opportunity for credit card payment
- Easier changes to user profiles
- Efficiency for Clerk's office staff
- Opportunity for product consolidation



Pango Permit Portal

- Time-stamping of applications
- Built-in monthly pro-ration capability
- Credit card payments: 10% of permit fee added
- Customers can still pay via check
- Flat monthly software fee to Village: estimated at \$400/month
- Real-time user profile modifications
- Streamline batch reporting



a Mobile Smart City Company

Expansion of multi-space meters

- Replacement of single-space meters
 - Fewer pieces of equipment to maintain
 - Existing single-space meters with various issues
- Current multi-space meters at end of life
- Opportunity for product consolidation
- Peer communities:
 - City of New Rochelle
 - Village of Hastings-on-Hudson
 - Village of Nyack



Pango Multi-space Meters

- Back-end reporting capabilities
- ADA accessibility
- Tap-to-pay capability
- Text integration
- Credit card payments: 16% of transaction
- No additional fees on cash transactions
- Estimated cost per device: \$7,950 + \$1,775 installation/shipping
- Monthly software cost: \$75/device

Pango Multi-space Meters



Enforcement and Violations Management

- Staff propose we move towards using Fundamental Business Solutions (FBS)
- Peer communities:
 - Town of Eastchester
 - Town of Ossining
 - Village of Tuckahoe
- Enforcement cost: \$856 per handheld device
- Court-related fees: 29% of late fees from receipts



Benefits of FBS

- Compliance with NYS regulations
- Connection to NYS DMV
- Timely generation of notices
- More detail on printed summonses
- Known integration with current and potential parking products
- User-friendliness for staff and customers
- Customer service experience for staff

Parking Management Considerations

- Consolidation of products will enhance integration
- Real-time information → better enforcement
- Enhanced opportunities for reporting
- Additional information to guide future parking decisions
- Public education on parking changes

Next Steps

- Finalize an agreement with Pango for a parking permit portal
- On-board FBS for enforcement and violation management services
- Establish desired number of multi-space meters
- Outreach and communications on potential parking changes and education
- Preparing procurement documents for multi-space meters